



## Cornforth Lane, NW7

£2,350 Per calendar month

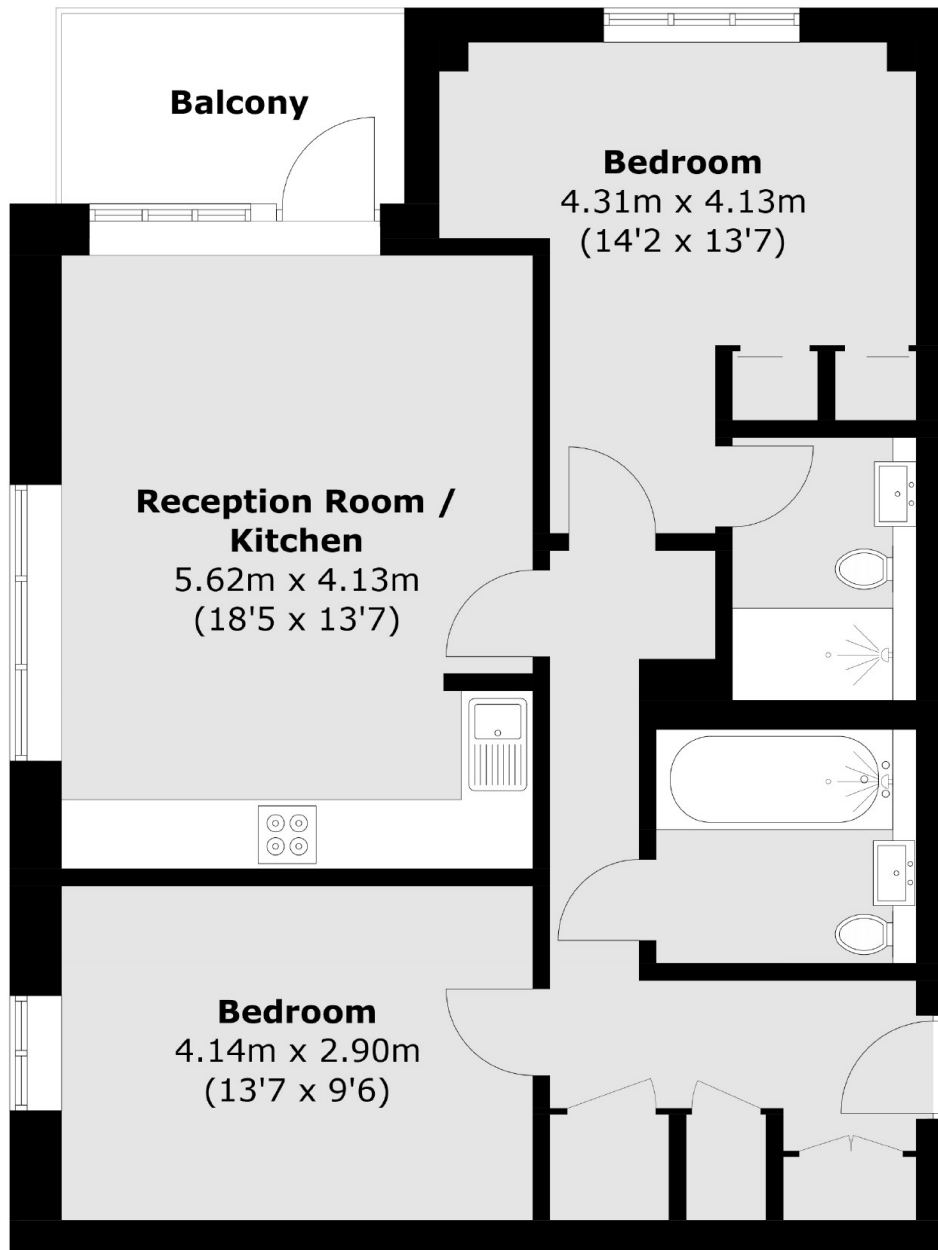
This beautiful, part furnished, two bedroom apartment is located in the very peaceful new development in Cornforth Lane with stunning views of across the Tottridge valley, it comprises of having a good size open plan lounge/kitchen which leads to a private balcony, two good size double bedrooms, two modern bathroom suites, extra storage space, security phone entry, secure underground car park with electric charge point. Available Oct 1st 2024.

Mill Hill East is closest Tube line which is within walking distance and Mill Hill Broadway is the closest Train Station.

### Features

- Two bedroom apartment
- Two modern bathrooms
- Double bedrooms
- Open plan lounge/kitchen
- Security phone entry system
- underground car parking
- Balcony & Lift
- Pets welcome

# Cornforth Lane, London, NW7



Total area (approx.): 71.2 sq. m (766.4 sq. ft)  
Balcony: 4.9 sq. m (52.7sq. ft)

## Dexters

Finchley  
126 Ballards Lane  
Finchley  
London  
Lettings  
020 8742 4181

Energy Rating: B. We aim to make our particulars both accurate and reliable. However they are not guaranteed; nor do they form part of an offer or contract. If you require clarification on any points then please contact us, especially if you're traveling some distance to view. Please note that appliances and heating systems have not been tested and therefore no warranties can be given as to their good working order.

 **RICS** | Regulated  
Estate Agent  
and Letting Agent

[dexters.co.uk](https://www.dexters.co.uk)