



## Wentworth Park, N3

### £925,000

A delightful five bedroom Edwardian house set in the heart of Finchley. The property has been extended over three floors, offering a private driveway and garage at the rear of the property.

Located moments from Finchley Central, offering fantastic links across the capital. Ballards Lane is within walking distance, offering an array of restaurants, coffee shops and rental outlets as well as catchment area for excellent schools.

### Features

- Five Double Bedrooms
- Semi Detached House
- Driveway & Garage
- Extended
- Freehold House
- Quiet Road



## Wentworth Park, N3

This semi detached house is arranged over three floors spanning over 1,682sqft. As you enter on the ground floor there is a spacious reception room with a bay window, there is a separate kitchen which has recently been renovated.

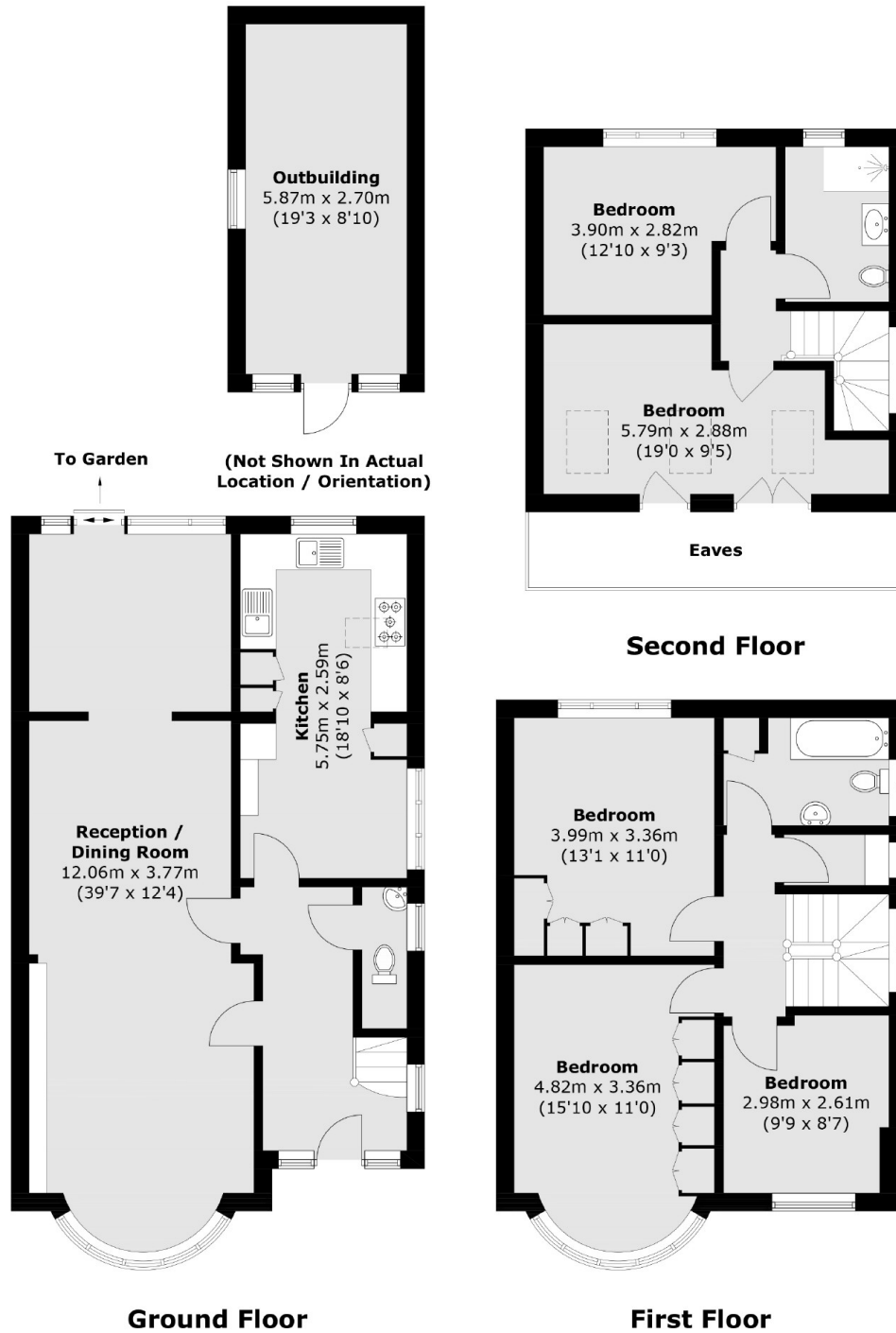
The reception room overlooks the garden which has a garage which can be used for storage or can be converted into a home gym or office space.

The first floor comprises three double bedrooms with lots of built in storage and a family bathroom. The top floor has recently been completed which has a further two double bedrooms and a bathroom.





# Wentworth Park, London, N3



Total area (approx.): 156.3 sq. m (1,682.4 sq. ft)  
(Excluding Eaves)  
Outbuilding: 16.0 sq. m (172.2 sq. ft)

## Dexters

Finchley  
126 Ballards Lane  
Finchley  
London  
Sales  
020 8742 4180

Energy Rating: D. We aim to make our particulars both accurate and reliable. However they are not guaranteed; nor do they form part of an offer or contract. If you require clarification on any points then please contact us, especially if you're traveling some distance to view. Please note that appliances and heating systems have not been tested and therefore no warranties can be given as to their good working order.

**RICS** Regulated  
Estate Agent  
and Letting Agent

dexters.co.uk