

Ballards Lane, N3

£500,000

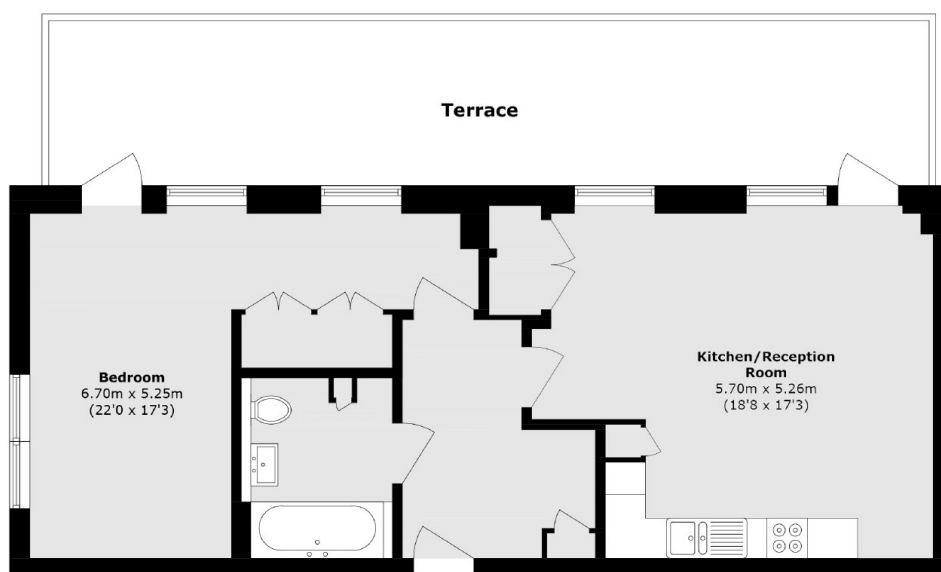
A beautifully presented one bedroom apartment set on the top floor of a modern block. The property has an open plan kitchen/ reception room, a large bathroom and a private terrace with amazing views of Mill Hill.

Conveniently located on Ballards Lane, this property has easy access to a variety of restaurants, coffee shops and retail outlets. Directly across from the apartment block is Victoria Park, and Finchley Central Tube station on the Northern Line (0.5m)

Features

- One Bedroom
- Private Terrace
- Top Floor Flat
- Excellent Views
- Open Plan Kitchen/Reception
- Over 760 Sq. Ft.

Ballards Lane, London, N3



Total area (approx.): 70.9 sq. m (763.1 sq. ft)

Terrace area (approx.): 32.3 sq. m (347.6 sq. ft)