



Dale Grove, N12

£3,000 Per calendar month

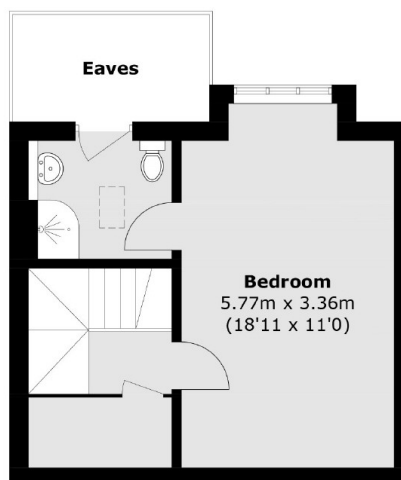
A Spacious four bedroom, three bathroom semi-detached family home (including two en suites) offers generous and versatile living space. Featuring two bright reception rooms, a stylish modern kitchen, and a guest WC, the house also boasts an impressive principal bedroom measuring around 19ft with excellent built-in wardrobes, plus additional storage throughout. To the rear, a private garden provides a lovely spot for relaxing or entertaining, while the front offers convenient off-street parking.

Ideally positioned between Woodside Park and West Finchley Underground stations, the property enjoys superb transport links into central London. The area benefits from a choice of highly regarded local schools, a variety of shops, cafés, and restaurants, as well as a nearby Waitrose. Several parks and green open spaces are also within easy reach, making this an excellent location for family living.

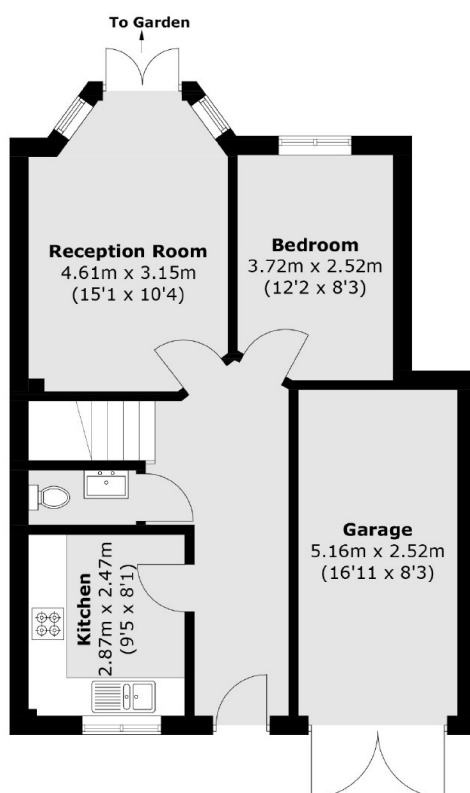
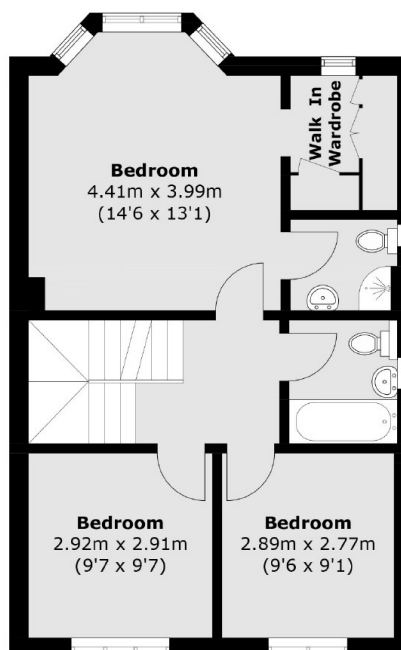
Features

- 4 Bedrooms
- 2 Receptions
- 3 Bathrooms
- Off Street Parking
- Garden
- Close to amenities

Dale Grove, London, N12



Second Floor



Ground Floor

First Floor

Approx Internal Area: 128.6 sq. m (1,384.3 sq. ft)
(Excluding Eaves)
Garage: 13.3 sq. m (143.2 sq. ft)
Total: 141.9 sq. m (1,527.5 sq. ft)

Dexters

Finchley
126 Ballards Lane
Finchley
London
Lettings
020 8742 4181

Energy Rating: . We aim to make our particulars both accurate and reliable. However they are not guaranteed; nor do they form part of an offer or contract. If you require clarification on any points then please contact us, especially if you're traveling some distance to view. Please note that appliances and heating systems have not been tested and therefore no warranties can be given as to their good working order.

RICS Regulated
Estate Agent
and Letting Agent

dexters.co.uk