



Oakleigh Park North, N20

£1,850 Per calendar month

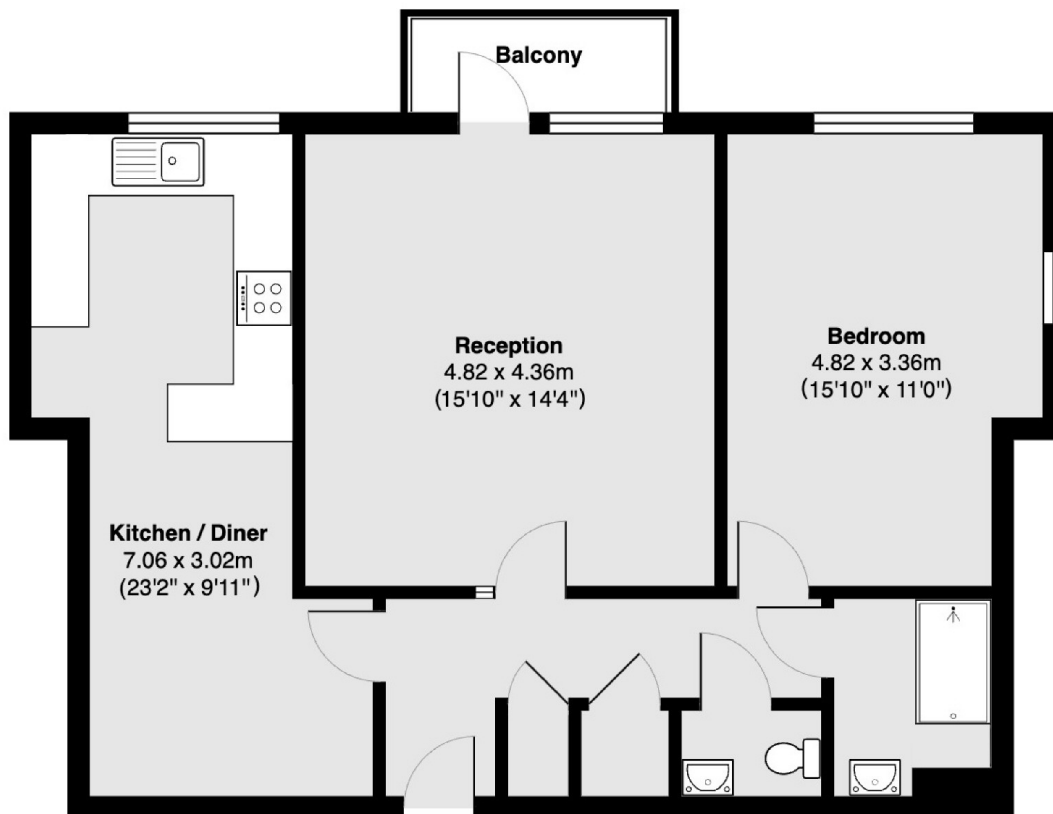
A well presented first floor, one bedroom apartment in a popular building. The property is neutrally decorated throughout, includes a modern kitchen, sole use of a balcony and first come, first serve parking. The rent is inclusive of water charges.

This property is conveniently located close to Whetstone High Road. Within walking distance to both Totteridge and Whetstone Station and Oakleigh Park overground station.

Features

- One Bedroom
- Spacious Living Room
- Eat In Kitchen
- Furnished
- Modern
- Parking

Oakleigh Park North, London, N20



Total area 71.4 sq m (approx) (769 sq ft approx)

Balcony total area 2.8 sq m (approx) (30 sq ft approx)