



## Glebelands Close, N12

**£1,900** Per calendar month

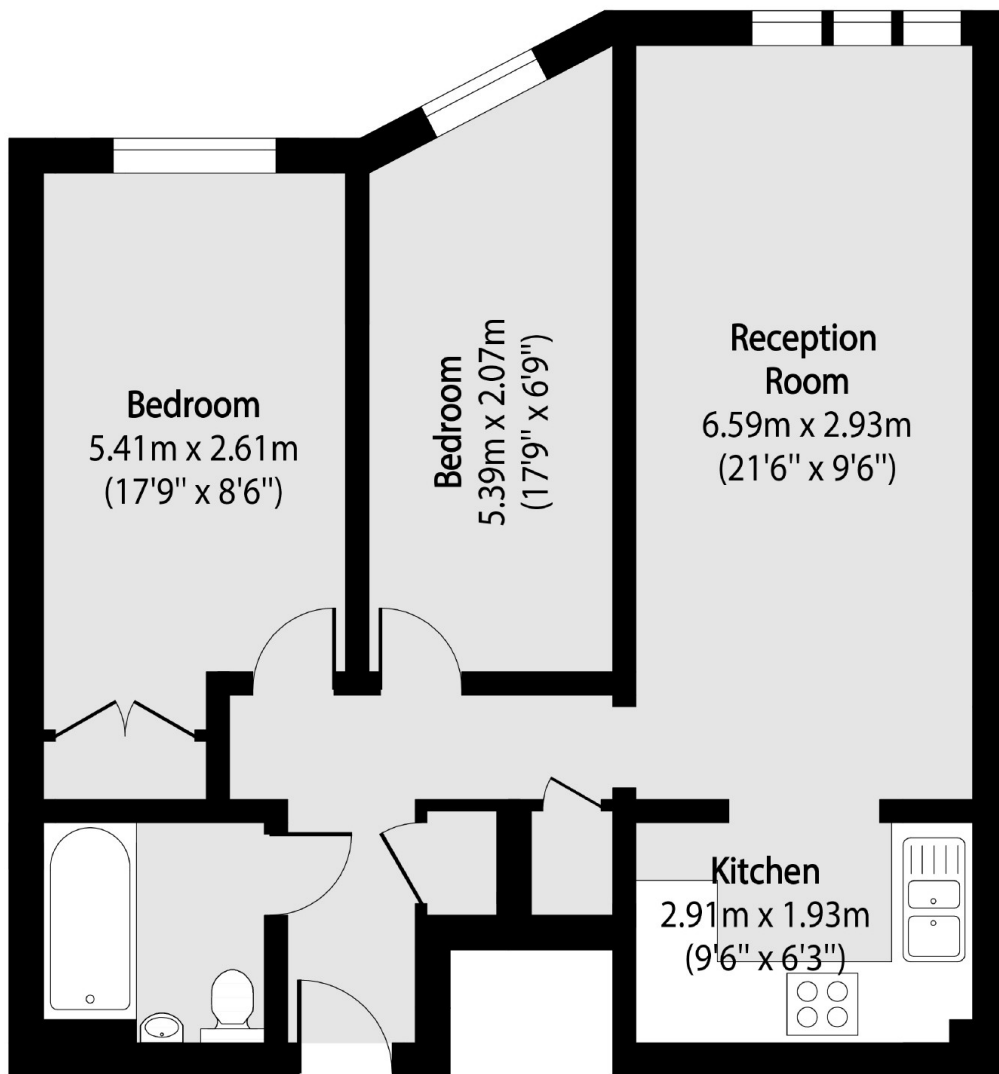
This two bedroom flat, sits within a gated development and includes an open-plan kitchen, allocated parking and lift access. These features provide both comfort and convenience for modern living.

It is ideally located between North and East Finchley, offering easy access to both areas. The A406 is just moments away, making travel and commuting simple.

### Features

- 2 Bedrooms
- 1 Bathroom
- 1 Reception
- Parking
- Lift
- Part Furnished

# Glebelands Close, London, N12



Total area (approx): 62.28 sq m (670 sq. ft)

## Dexters

Finchley  
126 Ballards Lane  
Finchley  
London  
Lettings  
020 8742 4181

Energy Rating: . We aim to make our particulars both accurate and reliable. However they are not guaranteed; nor do they form part of an offer or contract. If you require clarification on any points then please contact us, especially if you're traveling some distance to view. Please note that appliances and heating systems have not been tested and therefore no warranties can be given as to their good working order.

 **RICS** | Regulated  
Estate Agent  
and Letting Agent

[dexters.co.uk](https://www.dexters.co.uk)