



Woodside Lane, N12

£500,000

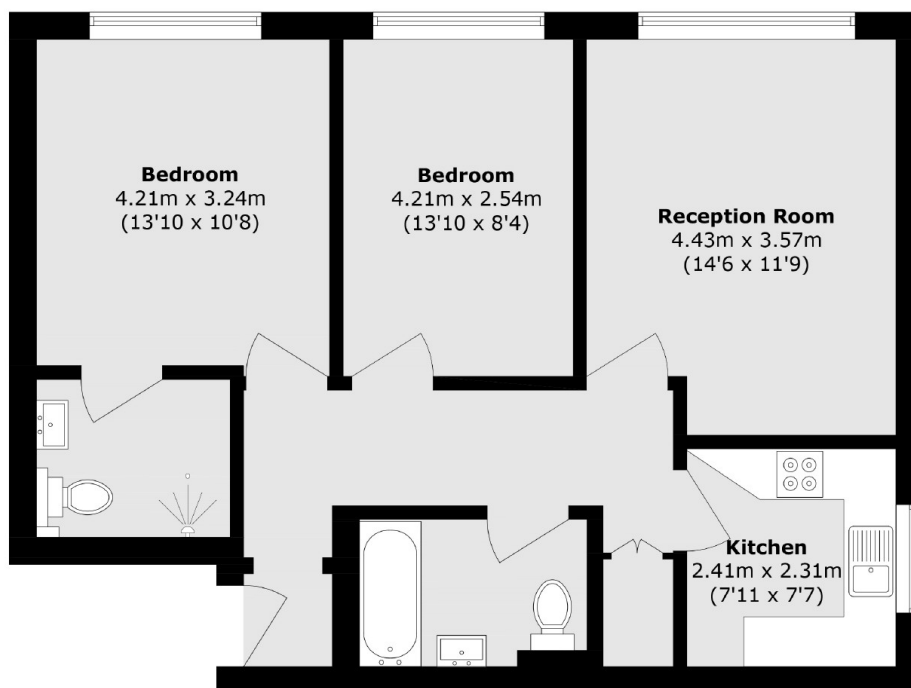
A two double bedroom apartment set within this purpose-built development. This property has two bathrooms, underfloor heating, a separate kitchen, a very well-maintained communal garden and gated off-street parking.

Brecon Court is located on Woodside Lane in North Finchley, with amenities along the High Road just a short walk away. Woodside Park station provides frequent connections across the capital via the Northern line.

Features

- Two Double Bedrooms
- Two Bathrooms
- Communal Garden
- Gated Parking
- Separate Kitchen
- Excellent Transport Links

Woodside Lane, London, N12



Total area (approx.): 62.6 sq. m (673.8 sq. ft)