



Hatley Close, N11

£975,000

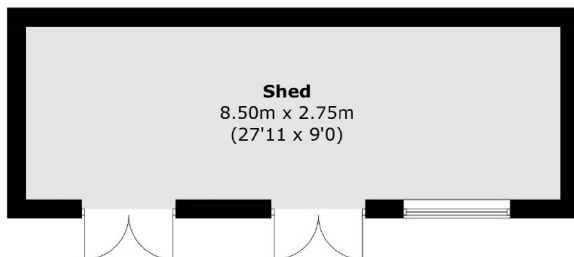
A beautifully presented four bedroom semi-detached family home, tucked away in a quiet cul-de-sac in New Southgate, bordering both Friern Barnet and Whetstone. This charming property features two spacious reception rooms, a downstairs WC, a utility room, a family bathroom, driveway parking and a south facing rear garden.

Hatley Close is a residential area on the borders of Friern Park, ideally located within the catchment area for several highly regarded schools and within walking distance of green spaces, local amenities and excellent public transport links.

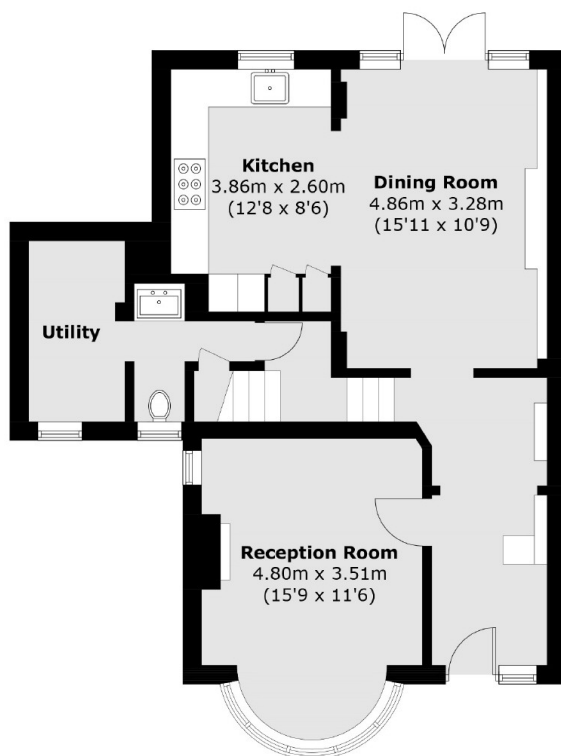
Features

- Four Bedrooms
- Utility Room
- Two Reception Rooms
- Driveway Parking
- South Facing Rear Garden
- Potential to Extend

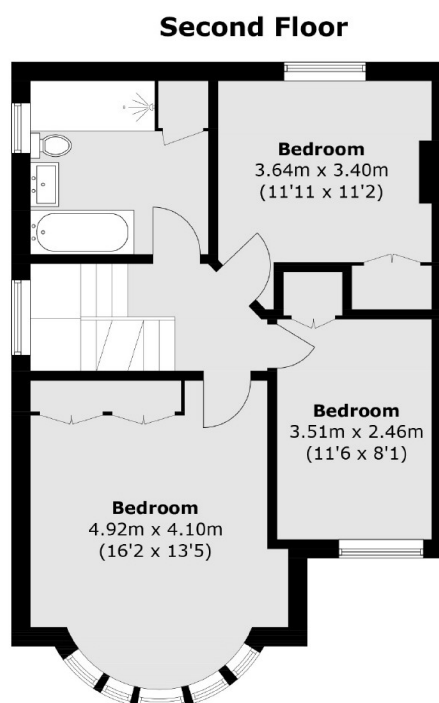
Hatley Close, London, N11



(Not Shown In Actual
Location / Orientation)



Ground Floor



Second Floor

First Floor

Total area (approx.): 144.5 sq. m (1,555.4 sq. ft)
(Excluding Eaves)
Shed: 23.8 sq. m (256.2 sq. ft)