



Mowbray Road, EN5

£712,500

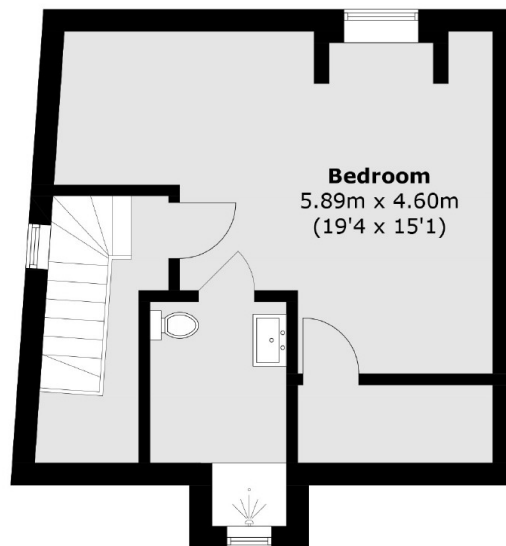
Built in 2019, this attractive three bedroom family home features a fully integrated German kitchen with integrated Siemens appliances, bi-folding doors leading from the living room to a rear patio, a family bathroom and a principal bedroom with an en suite shower room. The property also benefits from fitted wardrobes to all bedrooms and the remaining four years of its warranty.

Mowbray Road enjoys a convenient location within walking distance of both New Barnet mainline station and High Barnet Underground station. A variety of shops, restaurants and other amenities are easily accessible along Barnet High Street and in East Barnet Village. Additionally, the property is within walking distance of several places of worship.

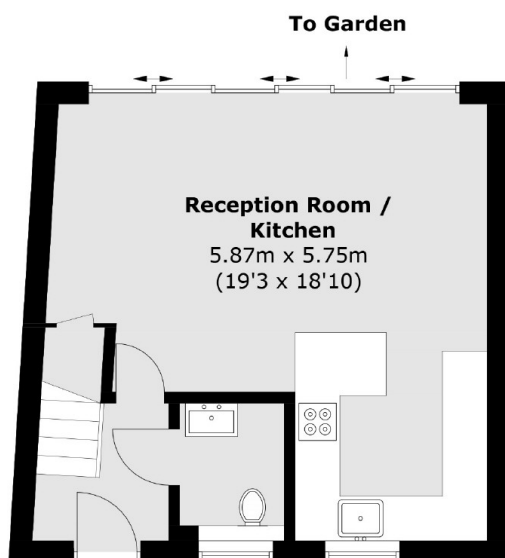
Features

- Three Bedrooms
- Two Bathrooms
- Driveway with Charing Point
- Rear Garden
- German Kitchen
- No Chain

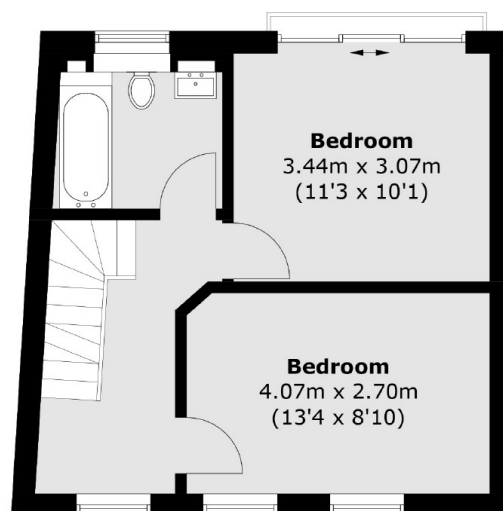
Mowbray Road, Barnet, EN5



Loft



Ground Floor



First Floor

Total area (approx.): 106.5 sq. m (1,146.3 sq. ft)