



Christchurch Avenue, N12

£1,300,000

Located in the heart of North Finchley, a beautifully presented six bedroom, three bathroom period house arranged over three floors and with driveway parking for two cars.

Conveniently positioned equidistant from the amenities of North Finchley and Finchley Central. Local transport links include West Finchley underground station, offering frequent services along the Northern line.

Features

- Six Bedrooms
- Three Bathrooms
- Two Reception Rooms
- Driveway Parking
- Mature Rear Garden
- No Onward Chain



Christchurch Avenue, N12

The ground floor has two large reception rooms and a stylish kitchen with a breakfast area, both of which lead out to a stunning, private rear garden.

On the first floor are three generous double bedrooms, an additional single bedroom and a family bathroom, and on the second floor are a further two double bedrooms and another bathroom.

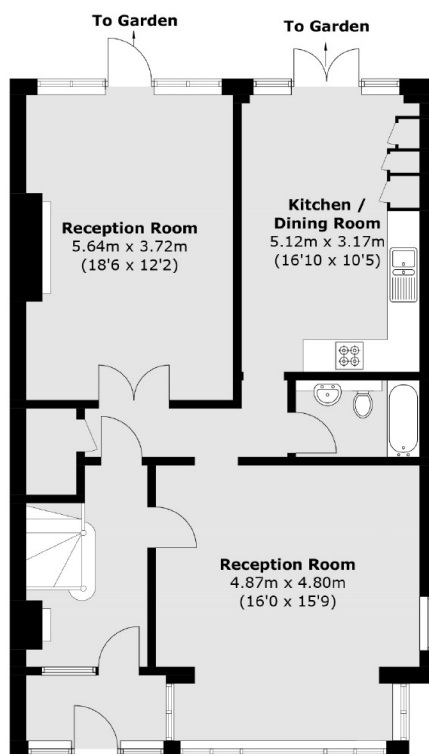
The property also falls within the catchment area of several highly regarded schools and will be sold with no onward chain.



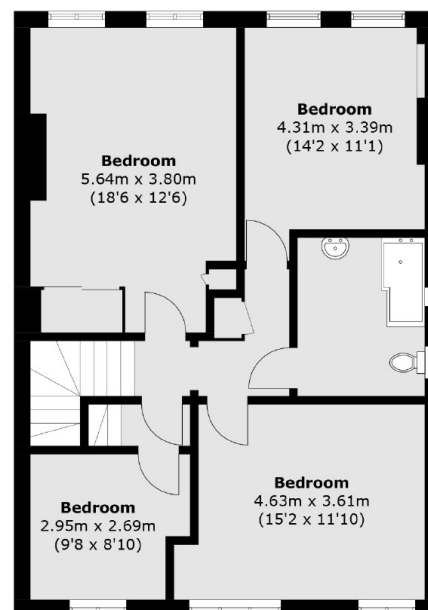
Christchurch Avenue, London, N12



Second Floor



Ground Floor



First Floor

Total area (approx.): 212.2 sq. m (2,284.0 sq. ft)
(Excluding Eaves)

Dexters

Finchley
126 Ballards Lane
Finchley
London
Sales
020 8742 4180

Energy Rating: . We aim to make our particulars both accurate and reliable. However they are not guaranteed; nor do they form part of an offer or contract. If you require clarification on any points then please contact us, especially if you're traveling some distance to view. Please note that appliances and heating systems have not been tested and therefore no warranties can be given as to their good working order.

RICS | Regulated
Estate Agent
and Letting Agent

dexters.co.uk