

## Stanhope Road, N12

£1,950 Per calendar month

A newly refurbished two split level apartment set on the second floor within this new development in the heart of North Finchley. The property has a single and a double size bedroom, a stunning open plan kitchen/ living area, modern bathroom and private terrace with direct access from the living room.

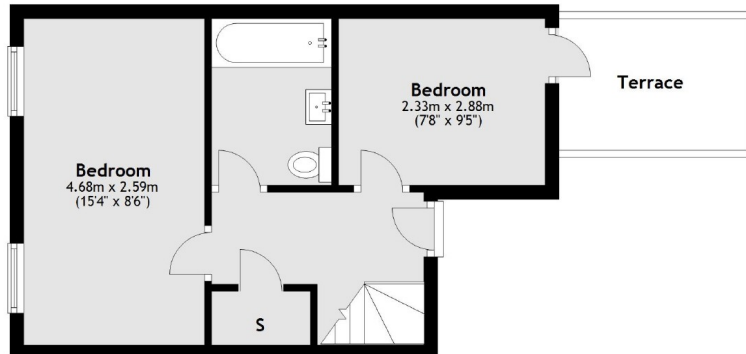
North Finchley High Road has a great selection of shops, coffee shops, supermarkets and restaurants. Woodside Park station gives commuters direct links into central London and City.

### Features

- Two Bedrooms
- Split Level Apartment
- Brand New Development
- Luxury Flat
- Open Plan Kitchen
- Wooden Floors
- Modern Bathroom
- Private Terrace
- Lift Access
- Bicycle Storage

# Stanhope Road, London, N12

## Second Floor



## Third Floor



Main area: Approx. 60.4 sq. metres (650.5 sq. feet)  
Plus roof terrace, approx. 5.3 sq. metres (57.6 sq. feet)