



Hornbeams Rise, N11

£1,500 Per calendar month

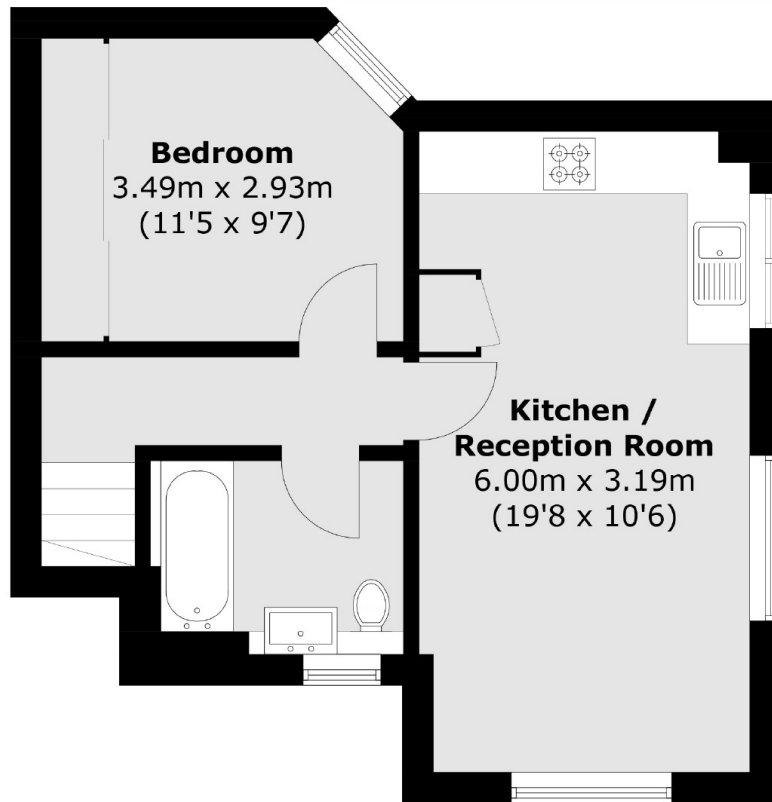
A modern unfurnished one-bedroom, first floor maisonette featuring a private entrance and hallway, an open-plan living room and kitchen with integrated appliances, a master bedroom with large mirrored fitted wardrobes, a modern family bathroom, and off-street parking.

The property is located in Hornbeams Rise, conveniently positioned between New Southgate and Friern Barnet, offering easy access to the A406 and other major highways. Nearby amenities include a variety of shops, restaurants, Tesco Superstore, and coffee shops.

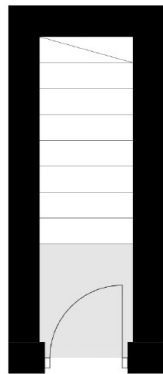
Features

- One Bedroom Maisonette
- Unfurnished
- Open Plan Kitchen
- Modern Bathroom Suite
- Off Street Parking
- Nearby Amenities

Hornbeams Rise, London, N11



First Floor



Ground Floor

Total area (approx.): 42.6 sq. m (458.5 sq. ft)