

## Stanhope Road, N12

**£2,000** Per calendar month

A stunning brand new two bedroom split level apartment set on the second floor set within this new development in the heart of North Finchley.

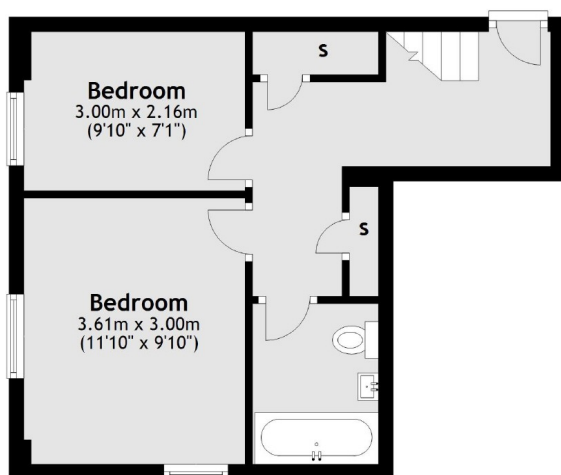
North Finchley High Road has a great selection of shops, coffee shops, supermarkets and restaurants. Woodside Park station gives commuters direct links into central London and City.

### Features

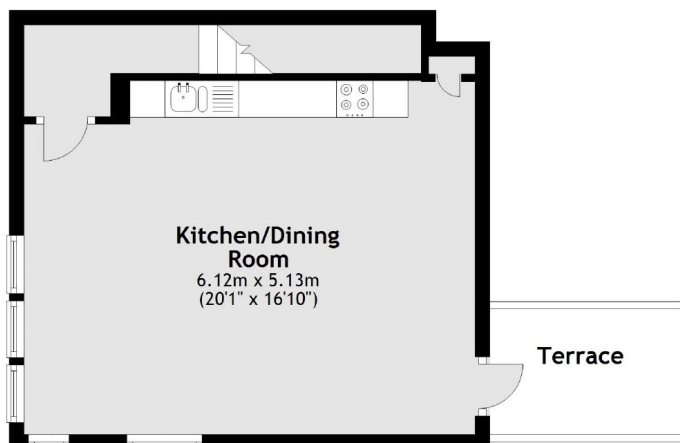
- Two Bedrooms
- Split Level Apartment
- Open Plan Kitchen
- Private Terrace
- Lift Access
- Bicycle Storage

# Stanhope Road, London, N12

Second Floor



Third Floor



Total area: approx. 66.2 sq. metres (712.3 sq. feet)