



## Nether Street, N3

### £380,000

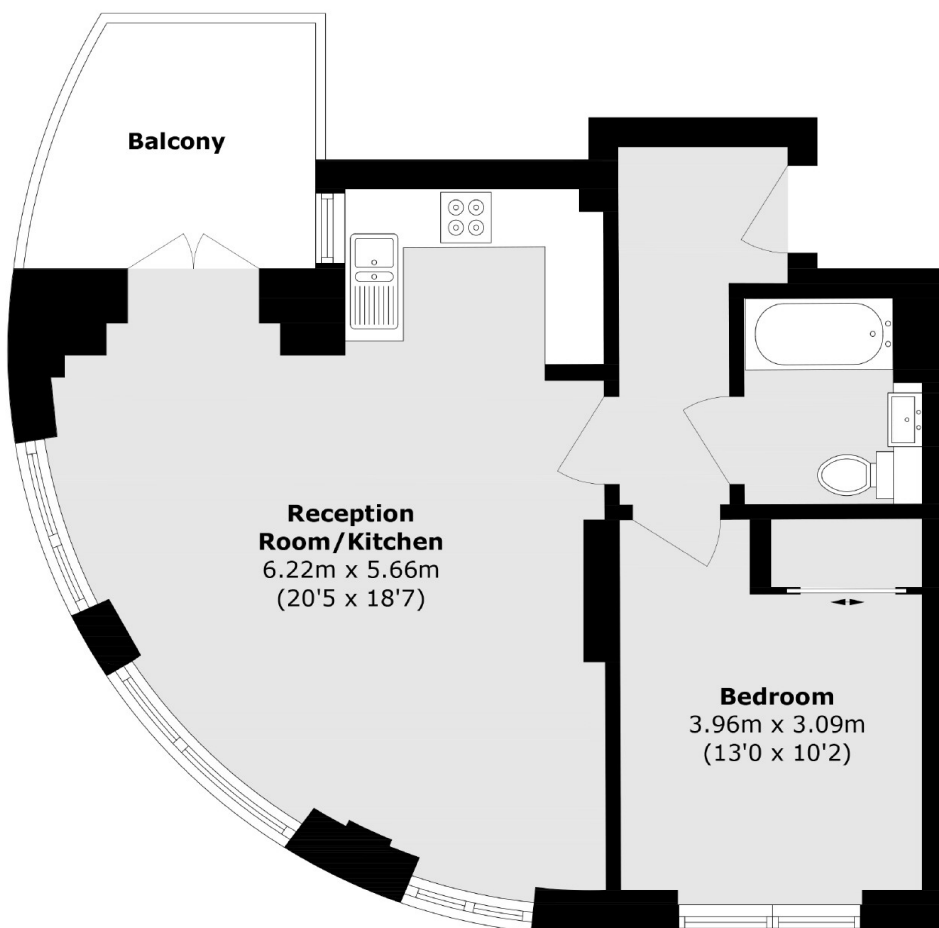
A modern one bedroom apartment, ideally located within walking distance of Finchley Central underground station and the amenities of Ballards Lane. This bright and stylish property features an open plan living and dining area, a fully integrated kitchen, a family bathroom, and a terrace.

Adastra House is a small, modern development situated on Nether Street in Finchley Central. Being well positioned not only for local amenities and use of public transport, it is within close proximity to green spaces and places of worship.

### Features

- One Double Bedroom
- Lift Assisted
- Open Plan Living
- Close to Transport
- Terrace
- Long Lease

# Nether Street, London, N3



Total area (approx.): 55.5 sq. m (597.4 sq. ft)  
Balcony area (approx.): 6.5 sq. m (69.9 sq. ft)