



## Christchurch Avenue, N12

£2,150 Per calendar month

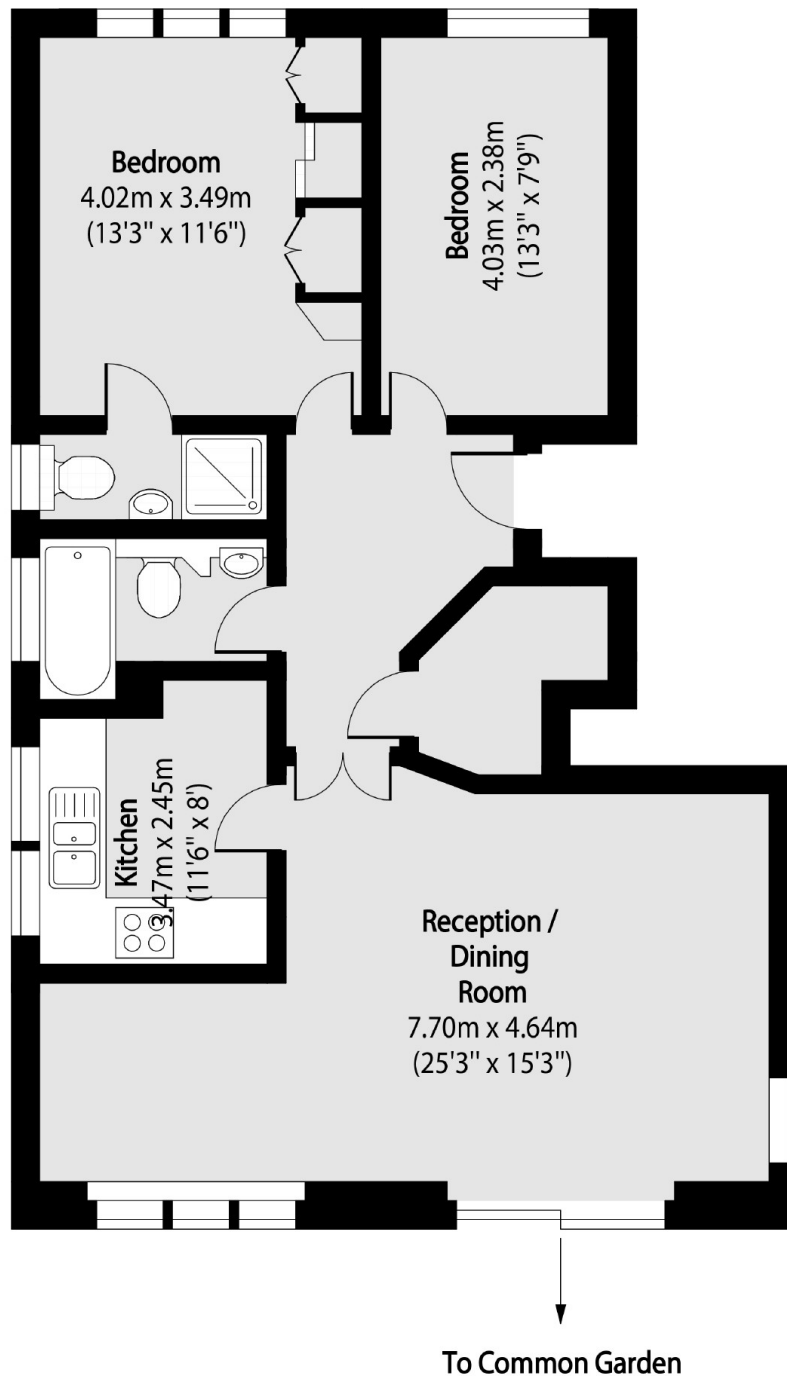
A spacious two double bedroom, two bathroom ground floor purpose-built flat offering a modern fitted kitchen, stylish bathrooms, and a generous lounge/dining area. Additional features include a communal garden, allocated parking space, video entry system, and security alarm.

Ideally located close to West Finchley Underground Station, providing excellent transport links and easy access to local shops, schools, and amenities.

### Features

- 2 Bedrooms
- 2 Bathrooms
- 1 Reception
- Ground Floor
- Parking
- Spacious

# Christchurch Avenue, London, N12



Total area (approx): 77.41 sq m (833 sq. ft)

## Dexters

Finchley  
126 Ballards Lane  
Finchley  
London  
Lettings  
020 8742 4181

Energy Rating: . We aim to make our particulars both accurate and reliable. However they are not guaranteed; nor do they form part of an offer or contract. If you require clarification on any points then please contact us, especially if you're traveling some distance to view. Please note that appliances and heating systems have not been tested and therefore no warranties can be given as to their good working order.

 **RICS** | Regulated  
Estate Agent  
and Letting Agent

[dexters.co.uk](https://www.dexters.co.uk)