



High Road, N20

£2,250 Per calendar month

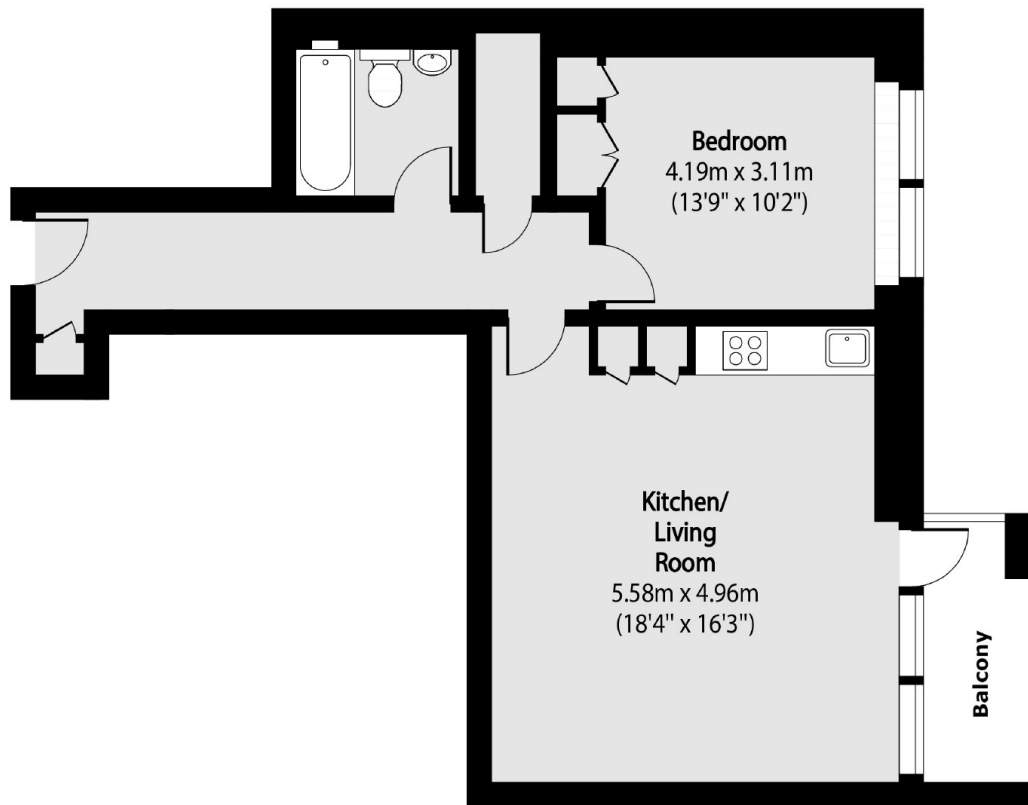
This beautifully designed first-floor apartment features a spacious hallway leading to a luxurious open-plan kitchen, living, and dining area, with direct access to a private east-facing balcony. The master bedroom boasts floor-to-ceiling windows and a bespoke Italian-fitted wardrobe, while the property also benefits from a designated parking space and access to a stunning rooftop communal area.

Situated in the heart of Whetstone, W Residence offers the ultimate in luxury living. With a wealth of local amenities including boutique shops, cafés, and restaurants, as well as excellent transport links providing easy access to central London, the location perfectly balances convenience and tranquillity. Designed and crafted by Yogo Group's innovative in-house team, this exceptional development sets a new standard for modern living.

Features

- One Bedroom
- Modern
- Balcony
- Parking
- Rooftop
- Concierge

High Road,
London, N20



Total area (approx): 55.01 sq m (592 sq. ft)

Balcony total area (approx): 3.95 sq m (43 sq. ft)

Dexters

Finchley
126 Ballards Lane
Finchley
London
Lettings
020 8742 4181

Energy Rating: . We aim to make our particulars both accurate and reliable. However they are not guaranteed; nor do they form part of an offer or contract. If you require clarification on any points then please contact us, especially if you're traveling some distance to view. Please note that appliances and heating systems have not been tested and therefore no warranties can be given as to their good working order.

 **RICS** | Regulated
Estate Agent
and Letting Agent

[dexters.co.uk](https://www.dexters.co.uk)