



## Woodgrange Avenue, N12

£2,500 Per calendar month

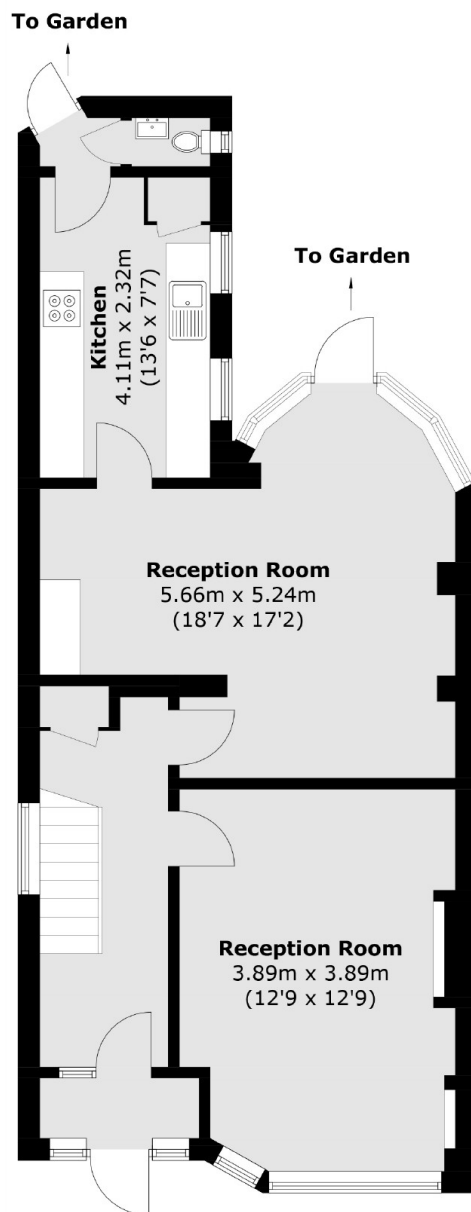
Located on Woodgrange Avenue, this freshly updated end-of-terrace home offers modern comfort and ample space, ideal for families or those needing extra room. With approximately 1,216 square feet, it features two spacious reception rooms, three bright bedrooms, a guest WC, generous storage, a large private garden with a patio, and off-street parking for one car.

Woodgrange Avenue is well known for its peaceful surroundings and excellent community feel. The property benefits from close proximity to reputable schools and beautiful local parks, making it a fantastic choice for families. For those who enjoy leisurely walks or outdoor activities, green spaces are just a stone's throw away. Transport links are excellent, with nearby train and bus routes offering easy access to the city and surrounding areas.

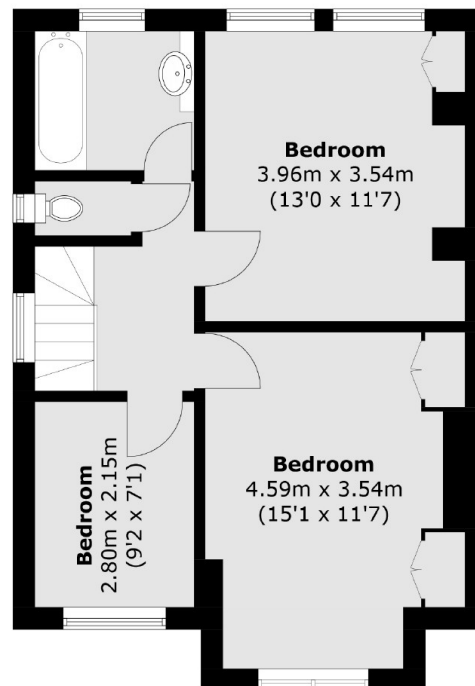
### Features

Three Bedrooms  
One Reception  
One Bathroom  
House  
Parking  
Garden

# Woodgrange Avenue, London, N12



**Ground Floor**



**First Floor**

Total area (approx.): 114.3 sq. m (1,230.3 sq. ft)