



Wentworth Close, N3

£875,000

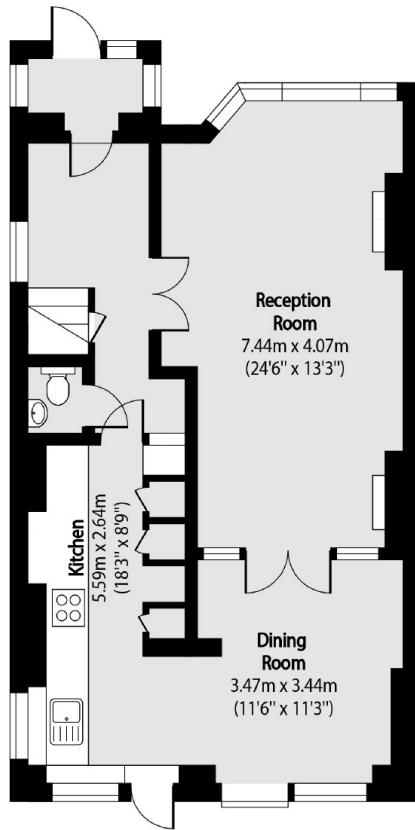
A four bedroom semi-detached house that comes complete with a large main reception area with an additional dining room, separate kitchen, downstairs WC, family bathroom, a garden flat with en suite shower room and driveway parking.

Wentworth Close is a peaceful cul-de-sac conveniently located near West Finchley Station and Ballards Lane, which offers a variety of coffee shops, retail outlets, and restaurants. The area is also served by highly regarded schools, including Moss Hall Infant and Junior.

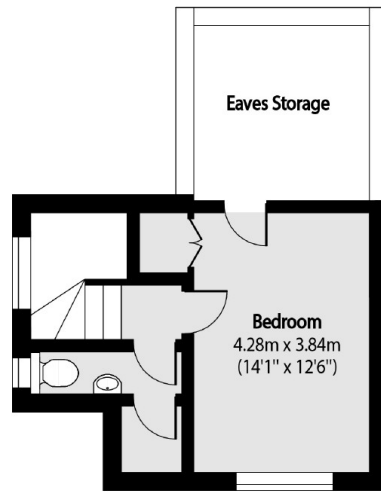
Features

- Semi-Detached Home
- Four Bedrooms
- Garden Room
- Driveway Parking
- Cul-de-sac Location
- No Onward Chain

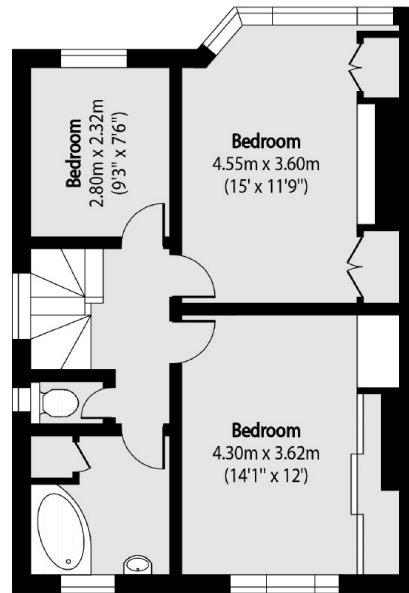
Wentworth Close, London, N3



Ground Floor



Second Floor



First Floor

Total area (approx): 160.26 sq m (1725 sq. ft)

(Excluding Eaves Storage)(Including Garden Flat)

Dexters

Finchley
126 Ballards Lane
Finchley
London
Sales
020 8742 4180

Energy Rating: D. We aim to make our particulars both accurate and reliable. However they are not guaranteed; nor do they form part of an offer or contract. If you require clarification on any points then please contact us, especially if you're traveling some distance to view. Please note that appliances and heating systems have not been tested and therefore no warranties can be given as to their good working order.

RICS Regulated
Estate Agent
and Letting Agent

dexters.co.uk