

## Whistler Drive, EN4

£5,200 Per calendar month

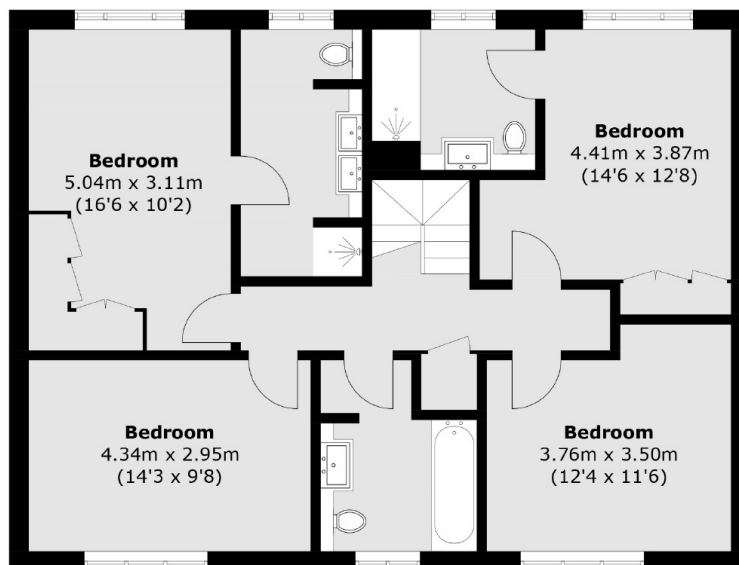
This fabulous four bedroom detached house is located in the Historic development of Trent Park. Part of the Chaplin collection, the property features a private garage, driveway and garden.

The property is only a 14 minute drive to the M25 and 5 minutes to Oakwood underground station. There's also a shuttle bus that operates throughout the development for the residents.

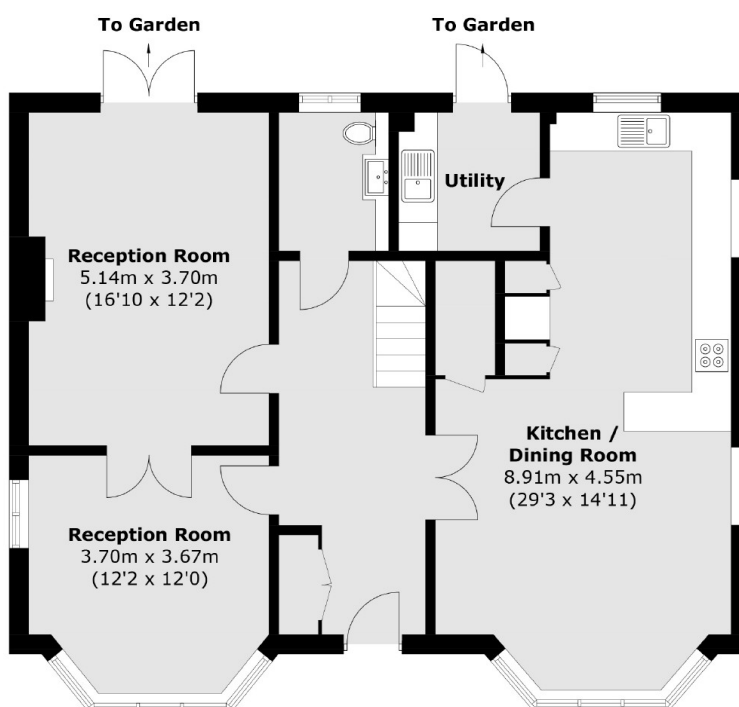
### Features

- Four Bedrooms
- Three Bathrooms
- Off Street Parking
- Underfloor Heating
- On-Site Gym
- Garage

Whistler Drive,  
Barnet, EN4



**First Floor**



**Ground Floor**

Total area (approx.): 179.1 sq. m (1,927.9 sq. ft)

**Dexters**

Finchley  
126 Ballards Lane  
Finchley  
London  
Lettings  
020 8742 4181

Energy Rating: . We aim to make our particulars both accurate and reliable. However they are not guaranteed; nor do they form part of an offer or contract. If you require clarification on any points then please contact us, especially if you're traveling some distance to view. Please note that appliances and heating systems have not been tested and therefore no warranties can be given as to their good working order.

 **RICS** | Regulated  
Estate Agent  
and Letting Agent

[dexters.co.uk](http://dexters.co.uk)