



Guardhouse Way, NW7

£575,000

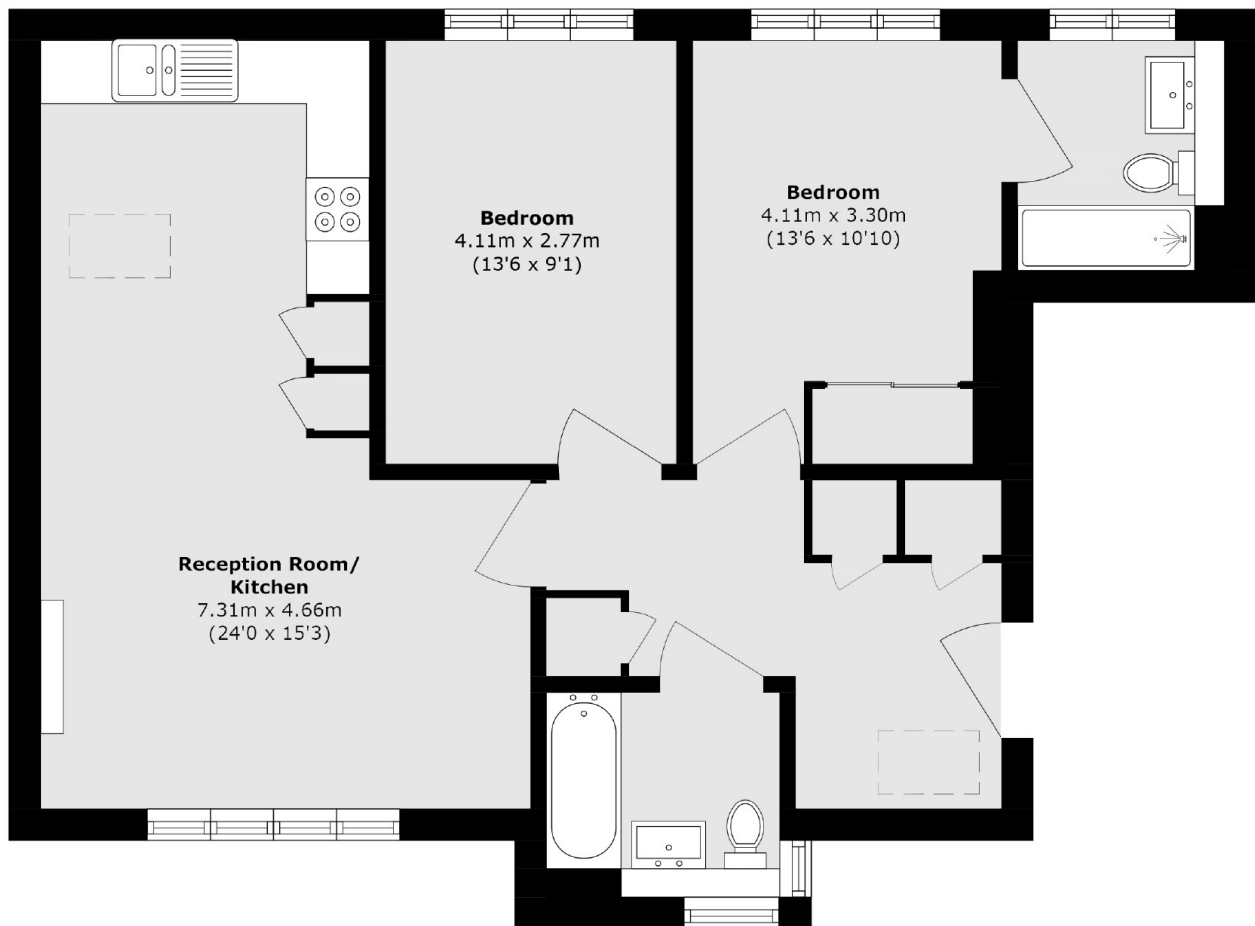
This stunning property features two spacious double bedrooms, a modern family bathroom, and an en suite to the principle bedroom. It also offers ample storage, a sleek integrated kitchen with space for a dining table, and a bright, airy living room.

Guardhouse Way is located at the highest point of the sought-after Millbrook Park Development in Mill Hill, offering a scenic outlook over green space. The property is within walking distance of local amenities situated near the development, as well as Mill Hill East Station.

Features

- Two Double Bedrooms
- Two Bathrooms
- No Onward Chain
- Lift Assisted
- Long Lease
- Parking

Guardhouse Way,
London, NW7



Total area (approx.): 73.3 sq. m (789.0 sq. ft)

Dexters

Finchley
126 Ballards Lane
Finchley
London
Sales
020 8742 4180

Energy Rating: B. We aim to make our particulars both accurate and reliable. However they are not guaranteed; nor do they form part of an offer or contract. If you require clarification on any points then please contact us, especially if you're traveling some distance to view. Please note that appliances and heating systems have not been tested and therefore no warranties can be given as to their good working order.

 **RICS** | Regulated
Estate Agent
and Letting Agent

[dexters.co.uk](https://www.dexters.co.uk)