



Bittacy Hill, NW7

£550,000

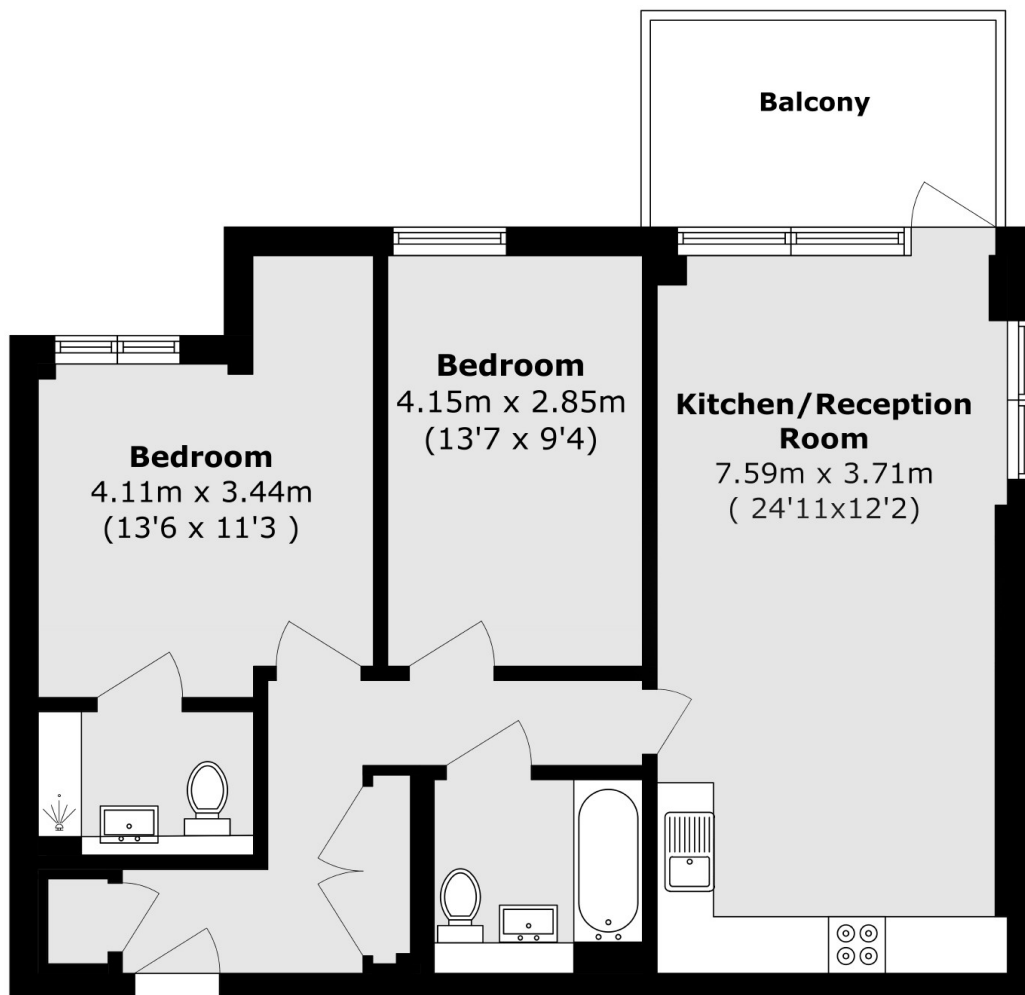
A beautifully presented two bedroom apartment featuring a private terrace, a family bathroom, and an en suite shower room. The property comes complete with a modern, fully integrated kitchen, a spacious living and dining area, and the added reassurance of remaining under NHBC Warranty.

Millbrook Park is an exclusive development located just a short walk from Mill Hill East station (Northern line), offering residents convenient access to the heart of the capital. Nearby amenities include a Co-Op, Waitrose and a Virgin Active Gym.

Features

- Under NHBC Warranty
- Two Double Bedrooms
- Two Bathrooms
- South Facing
- Modern Fitted Kitchen
- Underground Parking

Bittacy Hill, London, NW7



Total area (approx.): 75.3 sq. m (810.5 sq. ft)

Balcony area (approx.): 8.1 sq. m (87.1 sq. ft)

Dexters

Finchley
126 Ballards Lane
Finchley
London
Sales
020 8742 4180

Energy Rating: B. We aim to make our particulars both accurate and reliable. However they are not guaranteed; nor do they form part of an offer or contract. If you require clarification on any points then please contact us, especially if you're traveling some distance to view. Please note that appliances and heating systems have not been tested and therefore no warranties can be given as to their good working order.

 **RICS** | Regulated
Estate Agent
and Letting Agent

[dexters.co.uk](https://www.dexters.co.uk)