



Queens Avenue, N3

£900,000

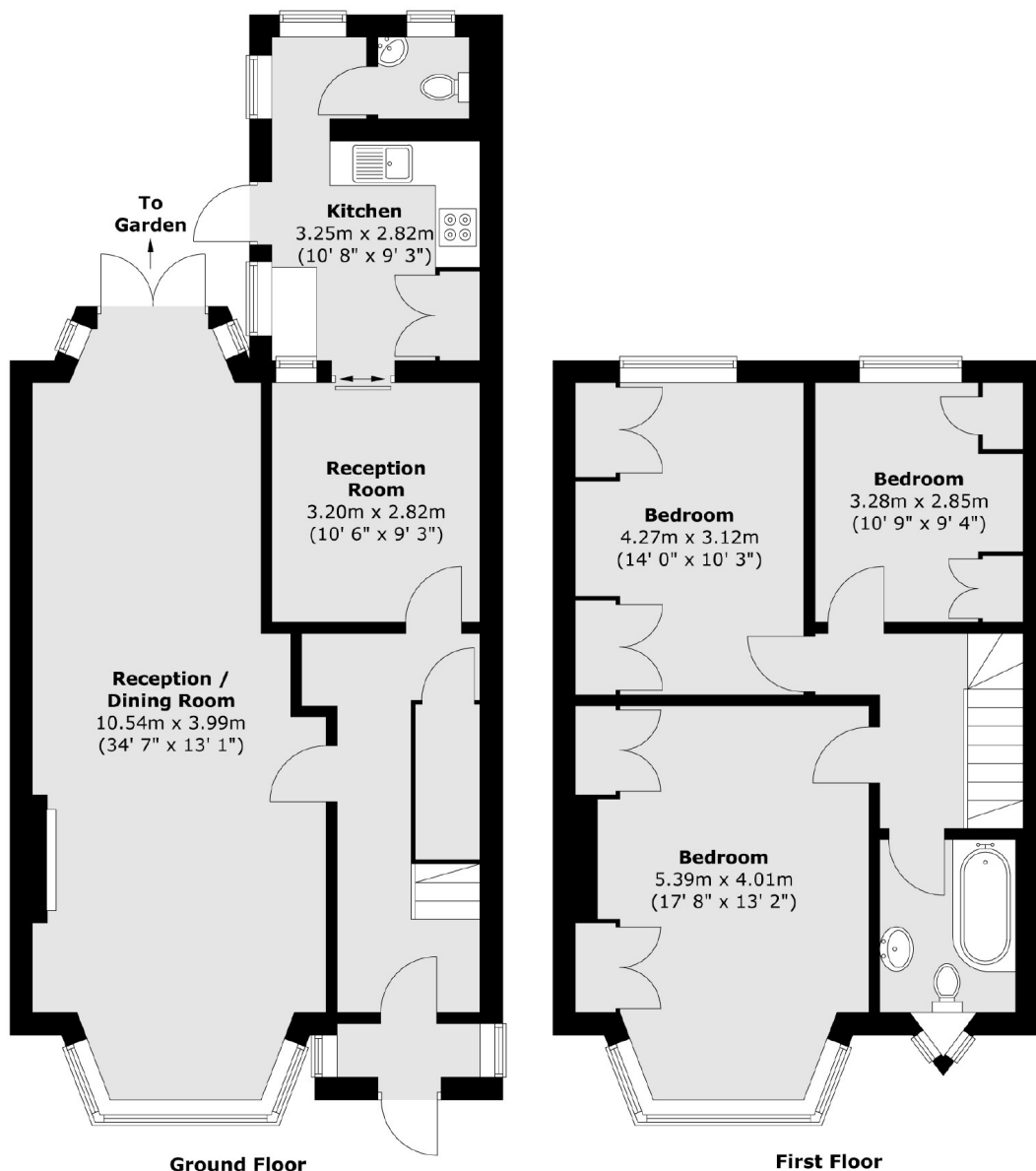
Hitting the market for the first time in over 50 years, this charming family home features three spacious double bedrooms, a family bathroom, three reception rooms, a mature rear garden, and exciting potential for extension (subject to planning permission).

Situated just moments from Finchley Central, this location offers excellent rail links across the capital and access to highly regarded schools. Within walking distance, you'll find Ballards Lane, which provides a variety of restaurants, coffee shops, and retail outlets. Victoria Park is also nearby.

Features

- End of Terrace
- Three Double Bedrooms
- No Chain
- Mature Rear Garden
- Potential to Extend STPP
- Three Reception Rooms

Queens Avenue, London, N3



Total area (approx.) : 128.7 sq. m (1385 sq. ft)

Dexters

Finchley
126 Ballards Lane
Finchley
London
Sales
020 8742 4180

Energy Rating: . We aim to make our particulars both accurate and reliable. However they are not guaranteed; nor do they form part of an offer or contract. If you require clarification on any points then please contact us, especially if you're traveling some distance to view. Please note that appliances and heating systems have not been tested and therefore no warranties can be given as to their good working order.

 **RICS** | Regulated
Estate Agent
and Letting Agent

[dexters.co.uk](https://www.dexters.co.uk)