



## Glenthorne Road, N11

### £775,000

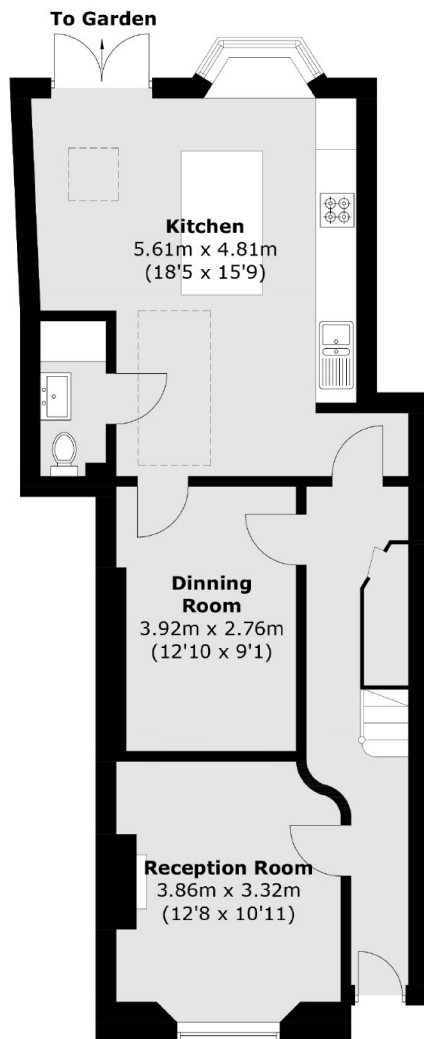
This four bedroom, mid-terrace family home features a spacious living room, dining room, and a large extended kitchen. It also includes a family bathroom, an additional WC/utility room, a garden with a home office, and on-street parking.

Glenthorne Road is ideally located within the catchment area for several highly regarded schools, including Wren Academy. Additionally, it offers the convenience of being within walking distance to public transport, local shops, and amenities.

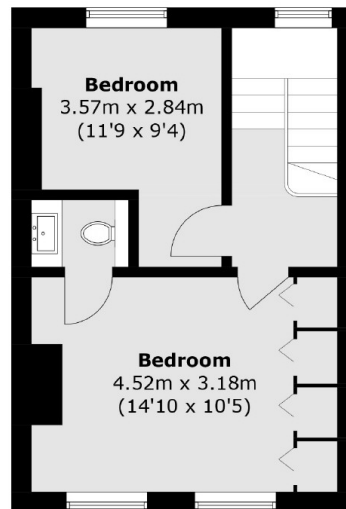
### Features

- Four Bedrooms
- Family Bathroom
- WC/Utility Room
- Three Reception Rooms
- Home Office
- On Street Parking

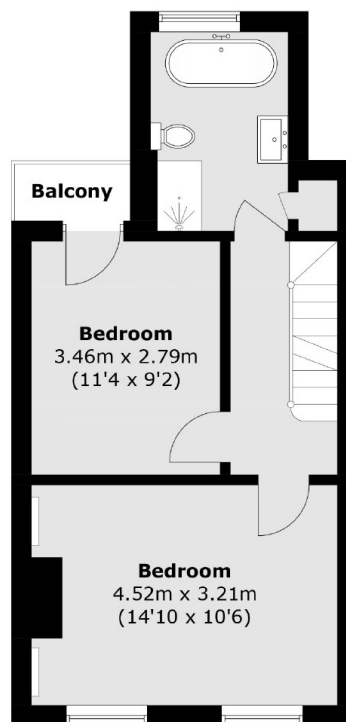
# Glenthorne Road, London, N11



**Ground Floor**



**Second Floor**



**First Floor**

Total area (approx.): 130.9 sq. m (1,409.0 sq. ft)  
Balcony (approx.): 1.5 sq. m (16.1 sq. ft)