



## Woodgrange Avenue, N12

### £945,000

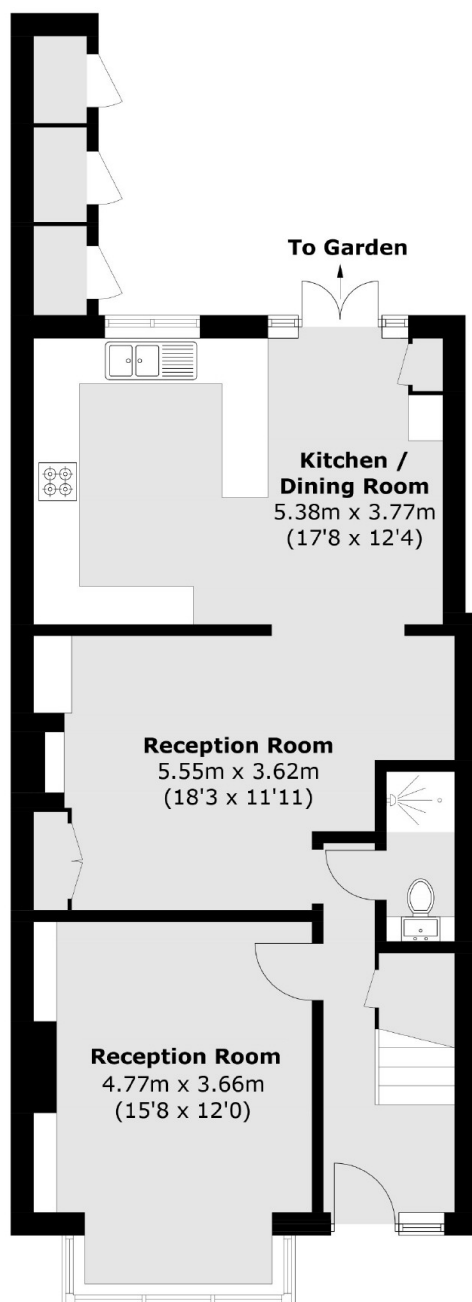
This terraced family home features three bedrooms, four bathrooms, two reception rooms, driveway parking, a covered patio, and a rear garden. It can easily be converted back to its original layout as a four bedroom family home, with one of the bathrooms being removed and replaced to its original floor plan.

This location offers excellent transport options for commuting and local travel. By public transport both Woodside Park and West Finchley tube stations are a short distance, both offering the Northern line. One of its key attractions is the excellent selection of schools nearby, including Northside Primary School and Wren Academy, both known for their outstanding academic results.

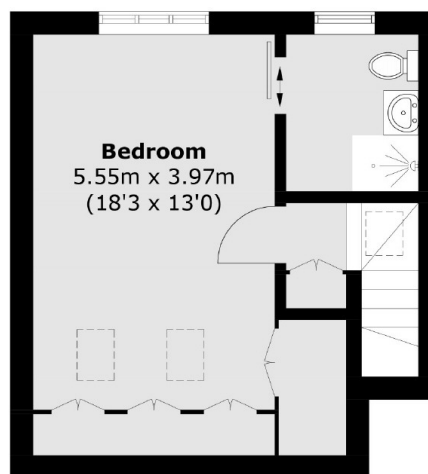
### Features

- Three Bedrooms
- Four Bathrooms
- Two Large Reception Rooms
- Spacious Garden
- Good Transport Links
- Driveway Parking

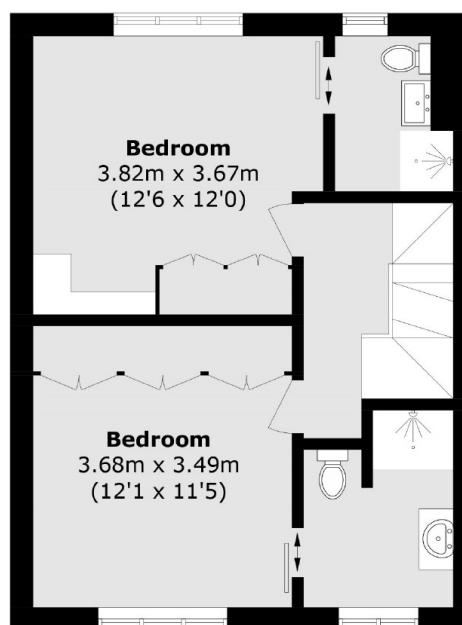
# Woodgrange Avenue, London, N12



**Ground Floor**



**Second Floor**



**First Floor**

Total area (approx.): 134.5 sq. m (1,447.8 sq. ft)  
External Cupboard: 2.6 sq. m (27.9 sq. ft)

# Dexters

Finchley  
126 Ballards Lane  
Finchley  
London  
Sales  
020 8742 4180

Energy Rating: B. We aim to make our particulars both accurate and reliable. However they are not guaranteed; nor do they form part of an offer or contract. If you require clarification on any points then please contact us, especially if you're traveling some distance to view. Please note that appliances and heating systems have not been tested and therefore no warranties can be given as to their good working order.

**RICS** Regulated  
Estate Agent  
and Letting Agent

dexters.co.uk