



Russell Lane, N20

£725,000

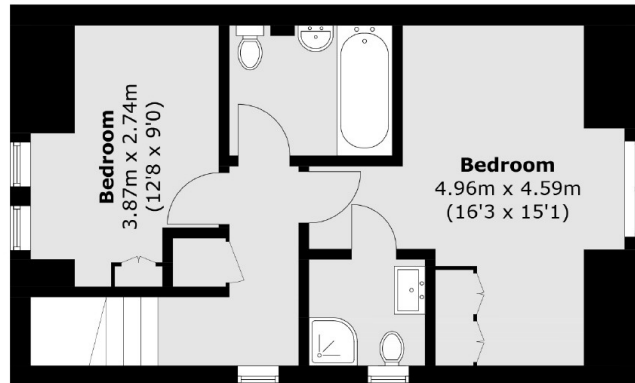
Spacious end-of-terrace property with a modern kitchen, open-plan living, three double bedrooms, one single, two en suites, a family bathroom, and a downstairs WC. Features a large garden, gated parking, and access to a communal gym.

Close to top schools, parks, and bus routes, with Whetstone High Street offering diverse shops, cafés, and restaurants for convenient living.

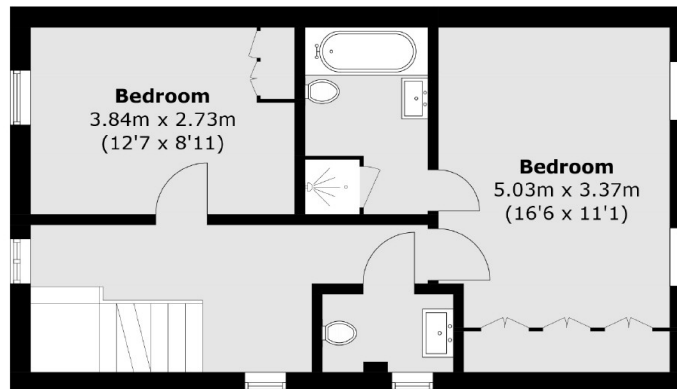
Features

- Four Bedrooms
- Three Bathrooms
- Allocated Parking
- Spacious Rear Garden
- Communal Gym
- Lounge/Diner

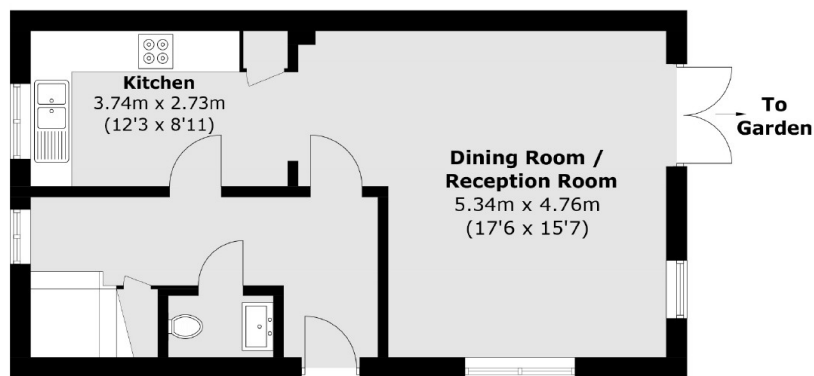
Russell Lane, London, N20



Second Floor



First Floor



Ground Floor

Total area (approx.): 133.0 sq. m (1,431.6 sq. ft)