



Oakleigh Avenue, N20

£400,000

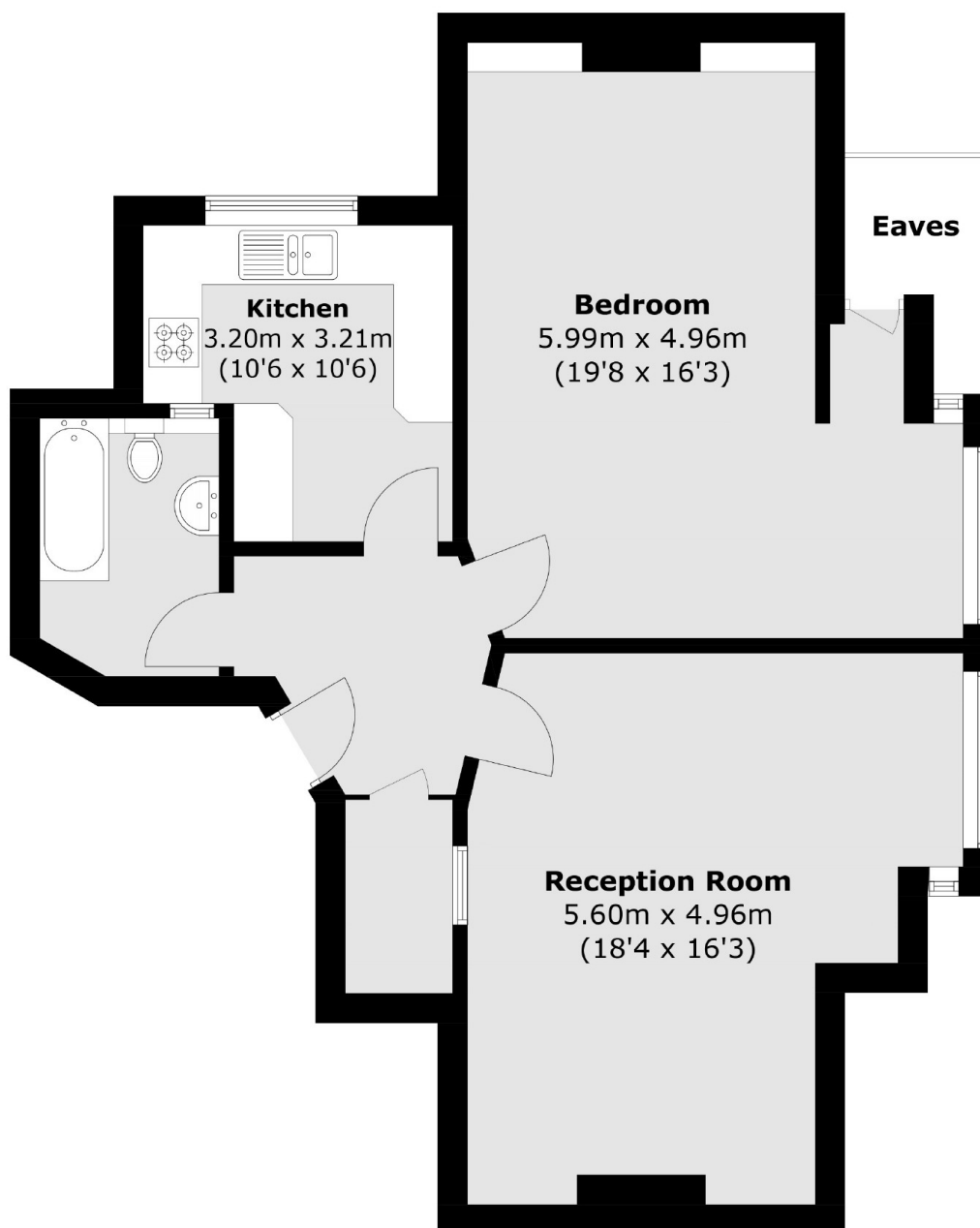
This modern one bedroom apartment offers many desirable features in the heart of Whetstone. Such as a bright and airy living room with large windows that exude natural light, perfect for relaxing or entertaining. One of the main selling points of this apartment is the spacious bedroom with plenty of storage, provided by the eaves.

A desirable location within easy reach of both Oakleigh Park overground station and Totteridge & Whetstone Northern line tube. The area has many highly regarded schools and is only a short walk to the popular High Street.

Features

- One Bedroom
- Spacious Reception room
- One Bathroom
- Spacious Reception room
- Allocated Parking space
- Transport Links

Oakleigh Avenue, London, N20



Total area (approx.): 72.5 sq. m (780.4 sq. ft)
(Excluding Eaves)