



Limes Avenue, N12  
£1,150,000

**Dexters**



## Limes Avenue, N12

A charming period four-bedroom semi-detached home, thoughtfully modernised to the highest standards. The first floor features engineered oak floors, complemented by Jim Lawrence lighting, Fired Earth tiles, Lefroy Brooks brassware, and The Anvil door fittings. This well-presented property exudes character and includes a living room, an open-plan bespoke kitchen and dining area, three spacious double bedrooms, with one additional room being used as an office, and a family bathroom with a roll-top bath. Outside, you'll find a large, leafy southwest-facing garden with mature shrubs and wonderful evening sunsets.

Limes Avenue is conveniently situated near both Woodside Park and Whetstone underground stations, offering regular Northern Line connections into the city. The nearby High Road boasts a variety of coffee shops, restaurants, and access to well-regarded schools within the area's catchment.

### Features

- Four Bedrooms
- Home Office
- Semi-Detached
- On Street Parking
- Two Reception Rooms
- Large Rear Garden





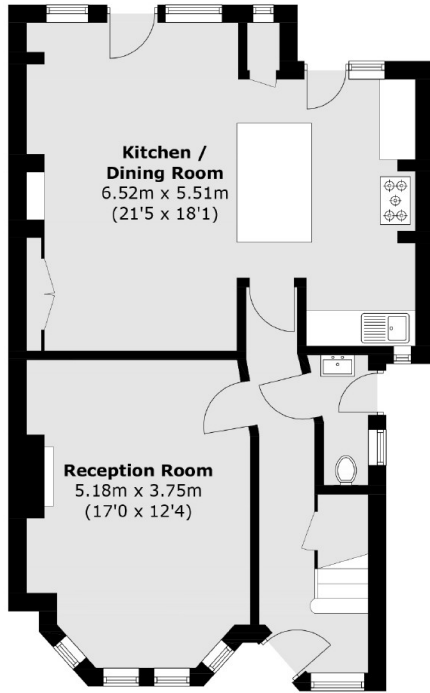




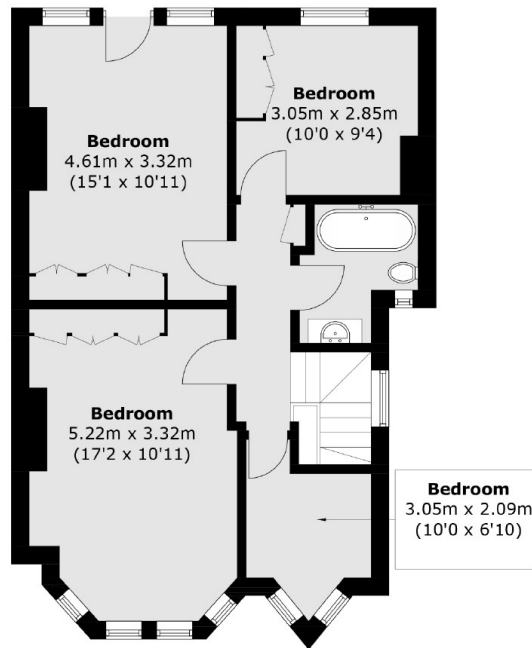




Limes Avenue,  
London, N12



**Ground Floor**



**First Floor**

Total area (approx.): 121.7 sq. m (1,310.0 sq. ft)