



## Howcroft Crescent, N3

£3,000 Per calendar month

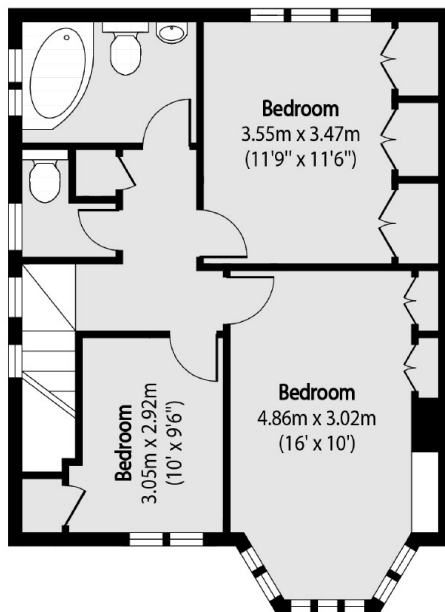
A charming three-bedroom house with off-street parking and sole use of its own garden, featuring a dedicated barbeque area. This property also boasts a modern bathroom and generously sized bedrooms.

Conveniently located just moments away from West Finchley Station and popular schools in the area.

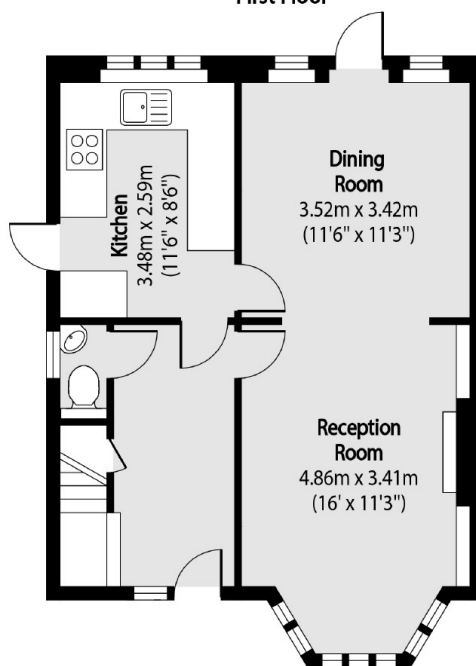
### Features

- Three Bedrooms
- One Reception
- One Bathroom
- Off Street Parking
- Garden
- Modern

# Howcroft Crescent, London, N3



First Floor



Ground Floor

Total area (approx): 96.79 sq m (1042 sq. ft)