



Woodberry Gardens, N12

£1,800 Per calendar month

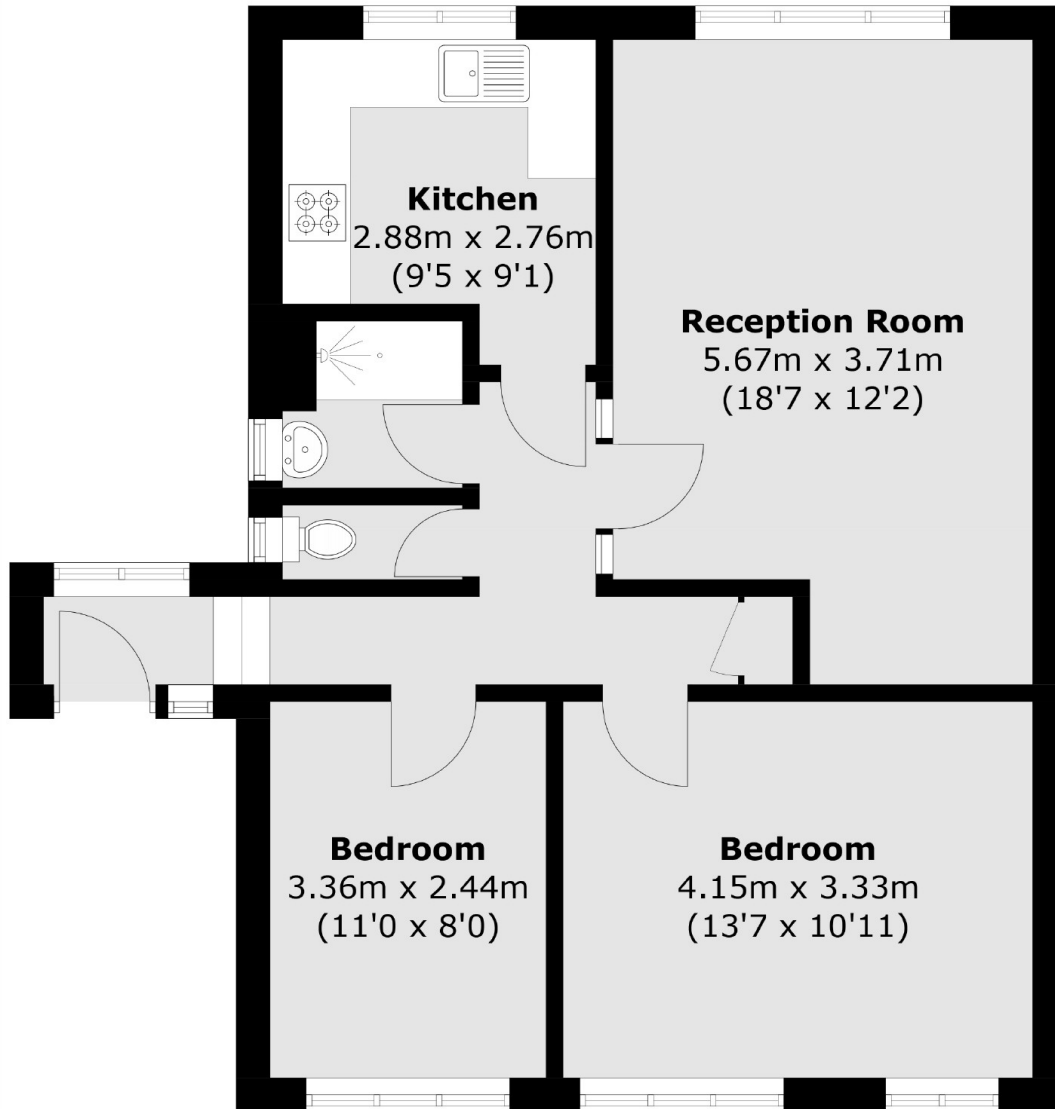
An expansive first floor maisonette featuring two double bedrooms and a generously sized separate reception area

This property is ideally located with convenient access to North Finchley High Road and West Finchley Underground station (Northern Line)

Features

- Two Bedrooms
- One Bathroom
- One Reception
- Sole Entrance
- Wooden Flooring
- First Floor

Woodberry Gardens, London, N12



Total area (approx.): 63.1 sq. m (679.2 sq. ft)