



Lewes Road, N12

£1,050,000

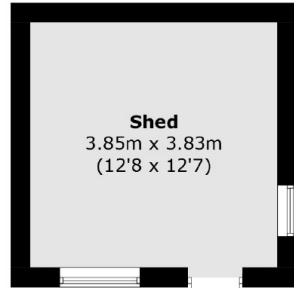
An extended four-bedroom, semi-detached house situated on Lewes Road in North Finchley. The property has three double bedrooms, a family bathroom, a loft extension with a second bathroom, and two reception rooms. The kitchen is recently fitted and leads to a spacious conservatory which can be extended subject to planning. Leading from the conservatory is a mature rear garden with an outhouse and a newly decked area.

The property is located within catchment for local highly regarded schooling such as the Wren Academy and The Compton School. Local amenities are within walking distance. Nearby public transport links include, Woodside Park Station which is just over a mile and bus routes which run regularly along Woodhouse Road.

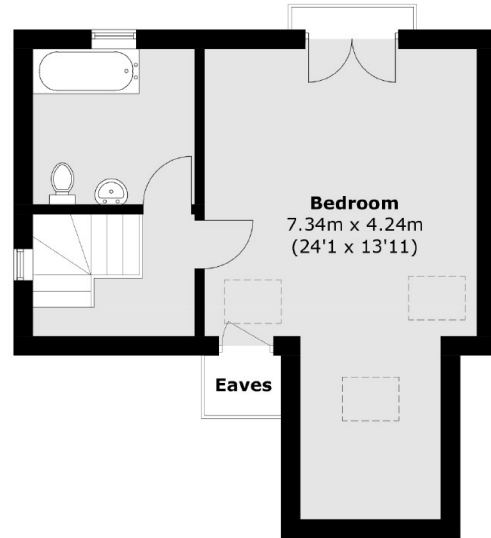
Features

- Four Bedrooms
- Two Bathrooms
- Two Reception Rooms
- Large Rear Garden
- Outhouse
- Driveway Parking

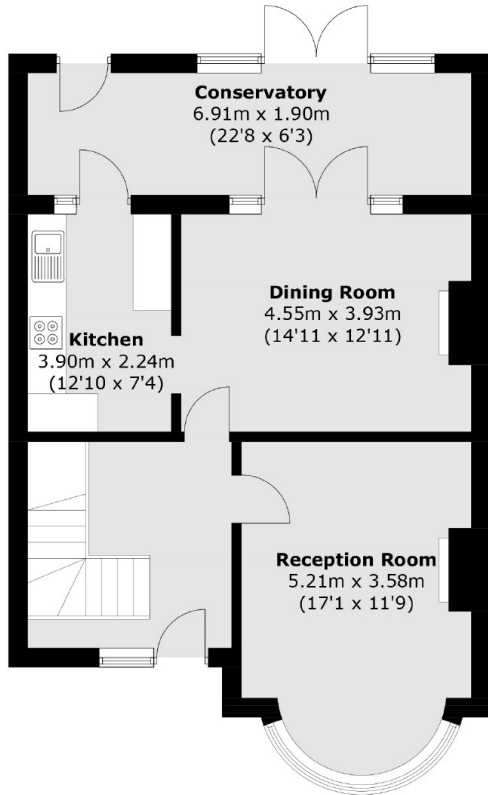
Lewes Road, London, N12



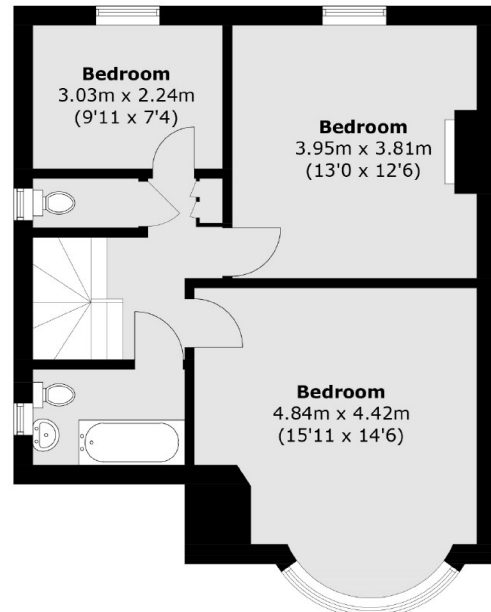
(Not Shown In Actual
Location / Orientation)



Second Floor



Ground Floor



First Floor

Total area (approx.): 158.6 sq. m (1707.1 sq. ft)
Shed area (approx.): 14.9 sq. m (160.3 sq. ft)
(Excluding Eaves)