



Woodside Park Road, N12

£2,700 Per week

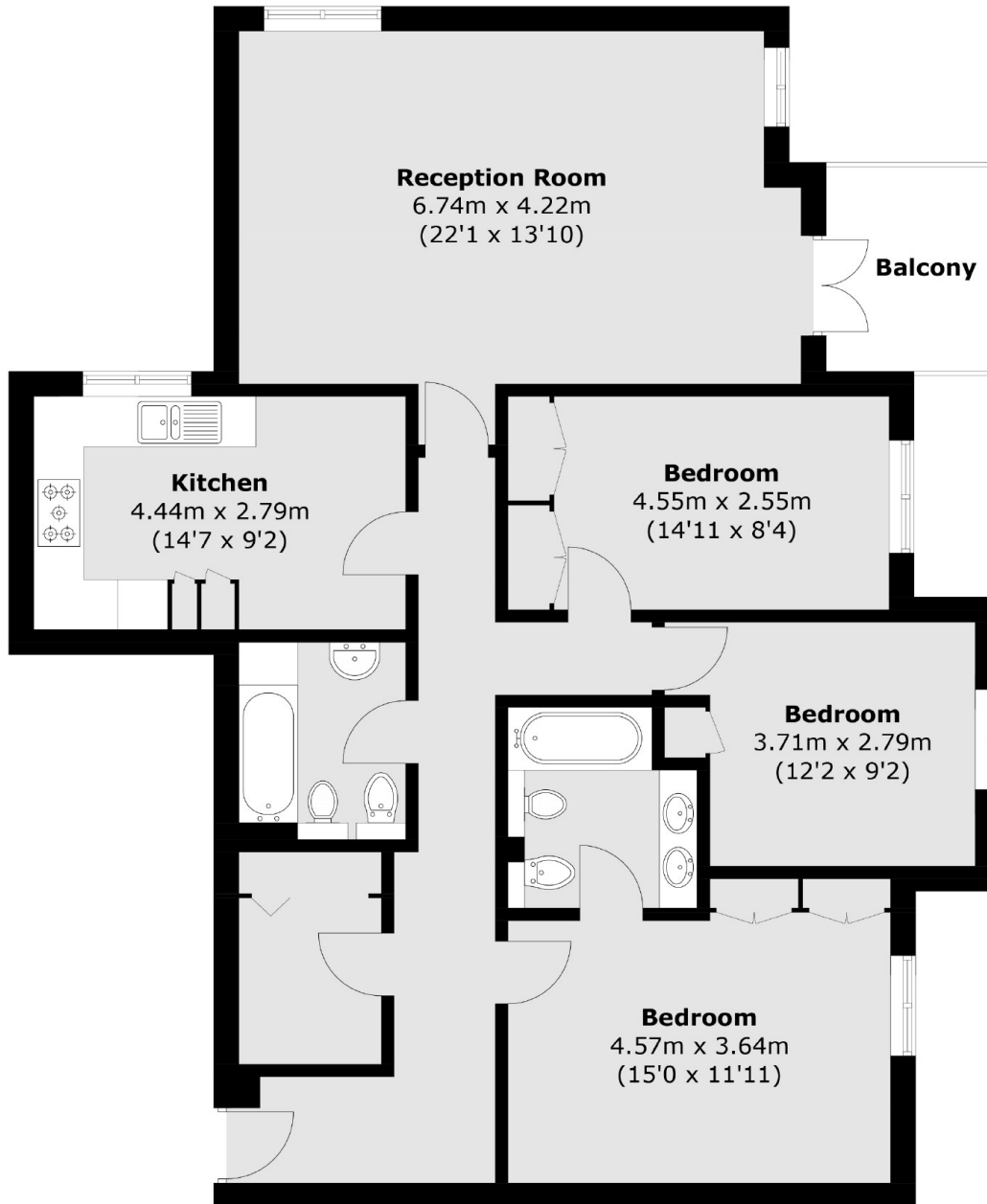
This expansive three-bedroom, two-bathroom apartment spans over 1000 square feet and is located within a sought-after purpose-built block. The property features its own balcony and a designated parking space.

Situated close to Woodside Park Station (Northern Line) and North Finchley High Road, this location provides access to numerous popular cafes, restaurants, and amenities.

Features

- Three Bedroom
- One Reception
- Two Bathrooms
- Modern Building
- Parking
- Balcony

Woodside Park Road,
London, N12



Total area (approx.): 111.7 sq. m (1,202.3 sq. ft)
Balcony (approx.): 4.9 sq. m (52.7 sq. ft)