

Woodlands Avenue, N3

£400,000

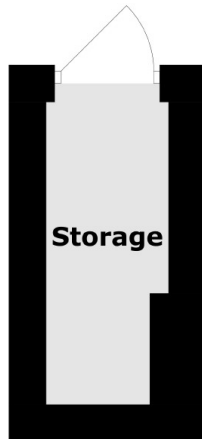
This purpose-built one-bedroom ground floor apartment features a private rear garden. Inside, you'll find a modern kitchen, a family bathroom, a living room with access to the garden, an outside utility room, and additional storage. The property also comes complete with 125 years remaining on the lease and low monthly service charges, ideal for a first time buyer.

Woodlands Avenue is conveniently located near Finchley Central tube station, providing frequent travel links across the city via the Northern Line. Nearby, Ballards Lane in Finchley offers a variety of retail shops, bars, restaurants, and bus routes connecting to neighbouring towns and Brent Cross Shopping Centre.

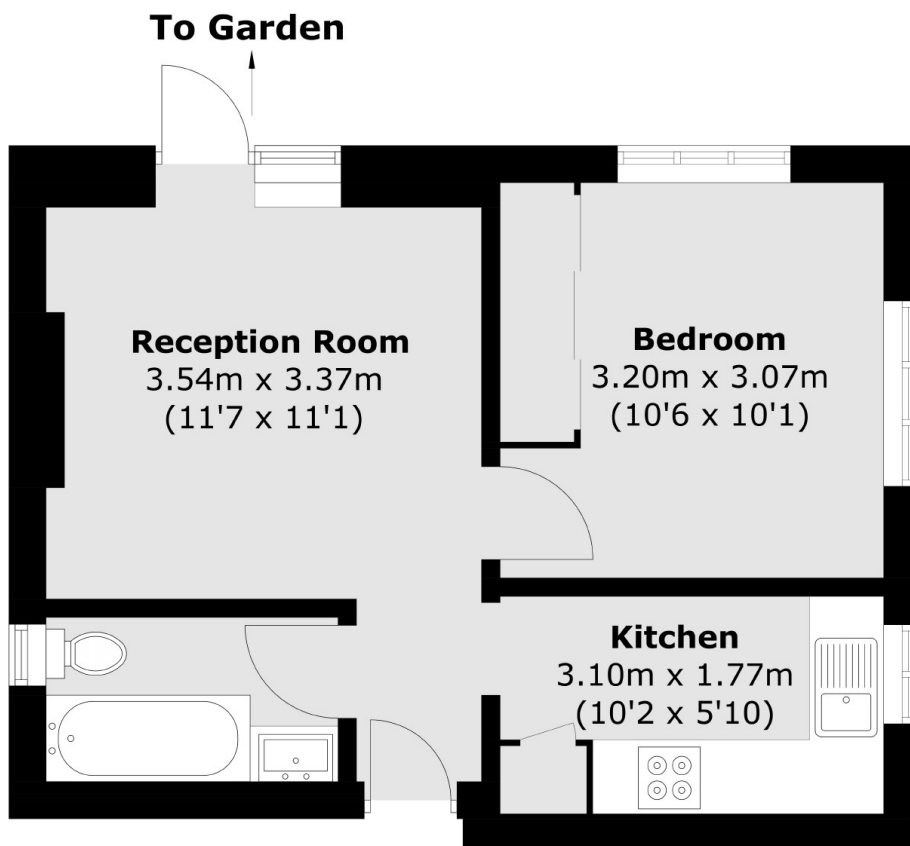
Features

- One Bedroom
- Family Bathroom
- Private Garden
- Long Lease
- Low Running Costs
- Close to Transport

Woodlands Avenue, London, N3



(Not Shown In Actual
Location / Orientation)



Total area (approx.): 33.9 sq. m (364.9 sq. ft)
Storage area (approx.): 2.5 sq. m (26.9 sq. ft)