



Greenway, N20

£1,595,000

A spacious four-bedroom detached family home, located near Totteridge & Whetstone station. The house features a living room, two additional reception rooms and a large kitchen that opens onto a mature south facing garden with a patio.

Greenway is a quiet residential road located just 0.2 miles from Totteridge & Whetstone Station. Local shops, amenities, additional public transportation options, and a selection of local and outstanding schools are all within a mile of the property.

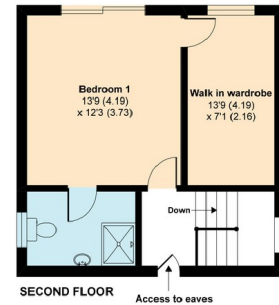
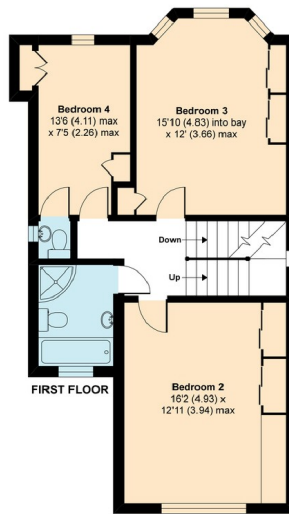
Features

- Four Bedrooms
- Two Bathrooms
- 2510 Sq Ft
- Driveway Parking
- South Facing Rear Garden
- Multiple Reception Rooms

Greenway, London, N20

Greenway, London, N20

Total = 2510 sq ft / 233.1 sq m
For identification only - Not to scale



Floor plan produced in accordance with RICS Property Measurement Standards incorporating International Property Measurement Standards (IPMS2 Residential). © n/checom 2020. Produced for Statons. REF: 653476