



Whitings Road, EN5

£500,000

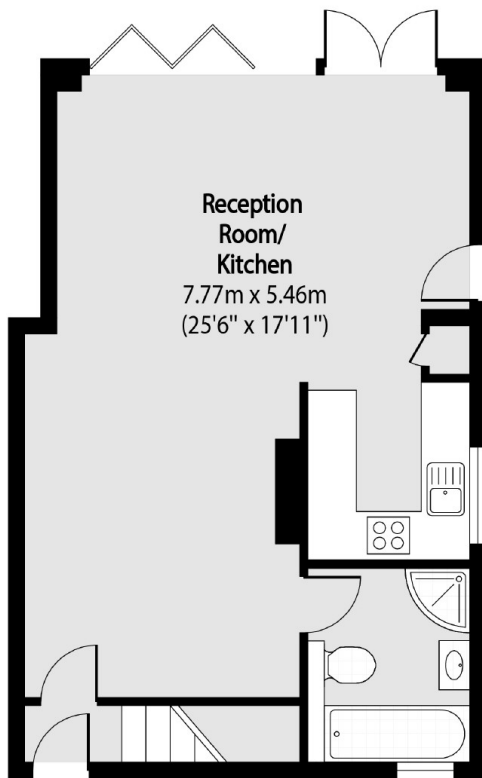
A beautifully presented two-bedroom, semi-detached home featuring an open-plan kitchen and dining room with bi-folding doors, a cozy living room, a downstairs bathroom, a large rear garden, and driveway parking.

Whitings Road is a quiet residential area of Barnet, close proximity to amenities public transport and local highly regarded schooling. The property is offered to the market with no onward chain.

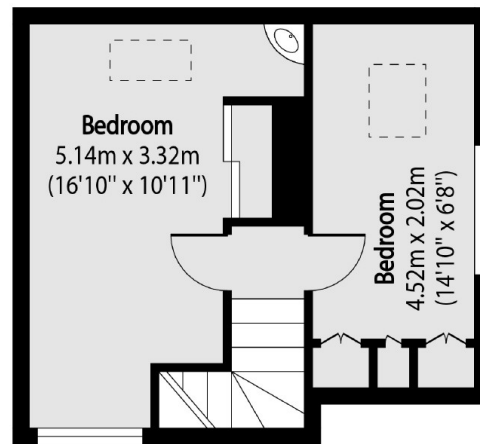
Features

- Two Bedrooms
- Semi Detached
- Open Plan
- Large Rear Garden
- Driveway Parking
- No Chain

Whitings Road, Barnet, EN5



Ground Floor



First Floor

Total area (approx): 71.80 sq m (773 sq. ft)