



High Road, N12

£400,000

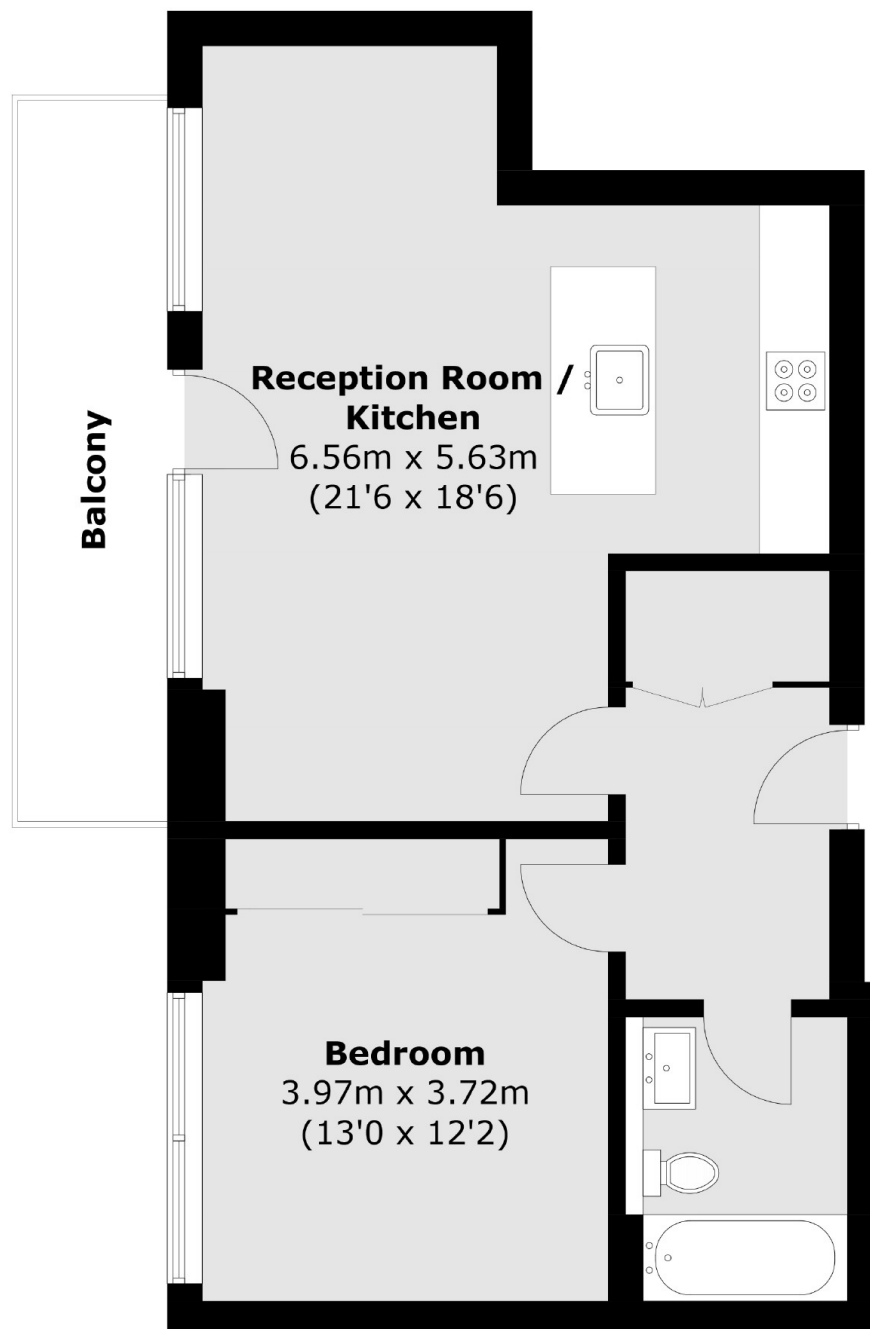
A modern one-bedroom apartment located on the third floor, featuring a south-facing private balcony. This property includes lift access, air conditioning, a spacious storage cupboard, fitted wardrobes, a fully equipped kitchen, a family bathroom, a large open-plan reception area, and a key code entry system.

North Finchley High Road features a variety of restaurants, coffee shops, and convenient local bus routes. Woodside Park station, located just 0.8 Miles away, offers frequent travel across the capital.

Features

- Large Double Bedroom
- Ample Storage
- South Facing Terrace
- Open Plan Living
- Key Code Entry
- Lift Access

High Road, London, N12



Total area (approx.): 54.7 sq. m (588.8 sq. ft)
Balcony: 7.9 sq. m (85.0 sq. ft)

Dexters

Finchley
126 Ballards Lane
Finchley
London
Sales
020 8742 4180

Energy Rating: C. We aim to make our particulars both accurate and reliable. However they are not guaranteed; nor do they form part of an offer or contract. If you require clarification on any points then please contact us, especially if you're traveling some distance to view. Please note that appliances and heating systems have not been tested and therefore no warranties can be given as to their good working order.

 **RICS** | Regulated
Estate Agent
and Letting Agent

dexters.co.uk