



## St. Mary's Avenue, N3

£795,000

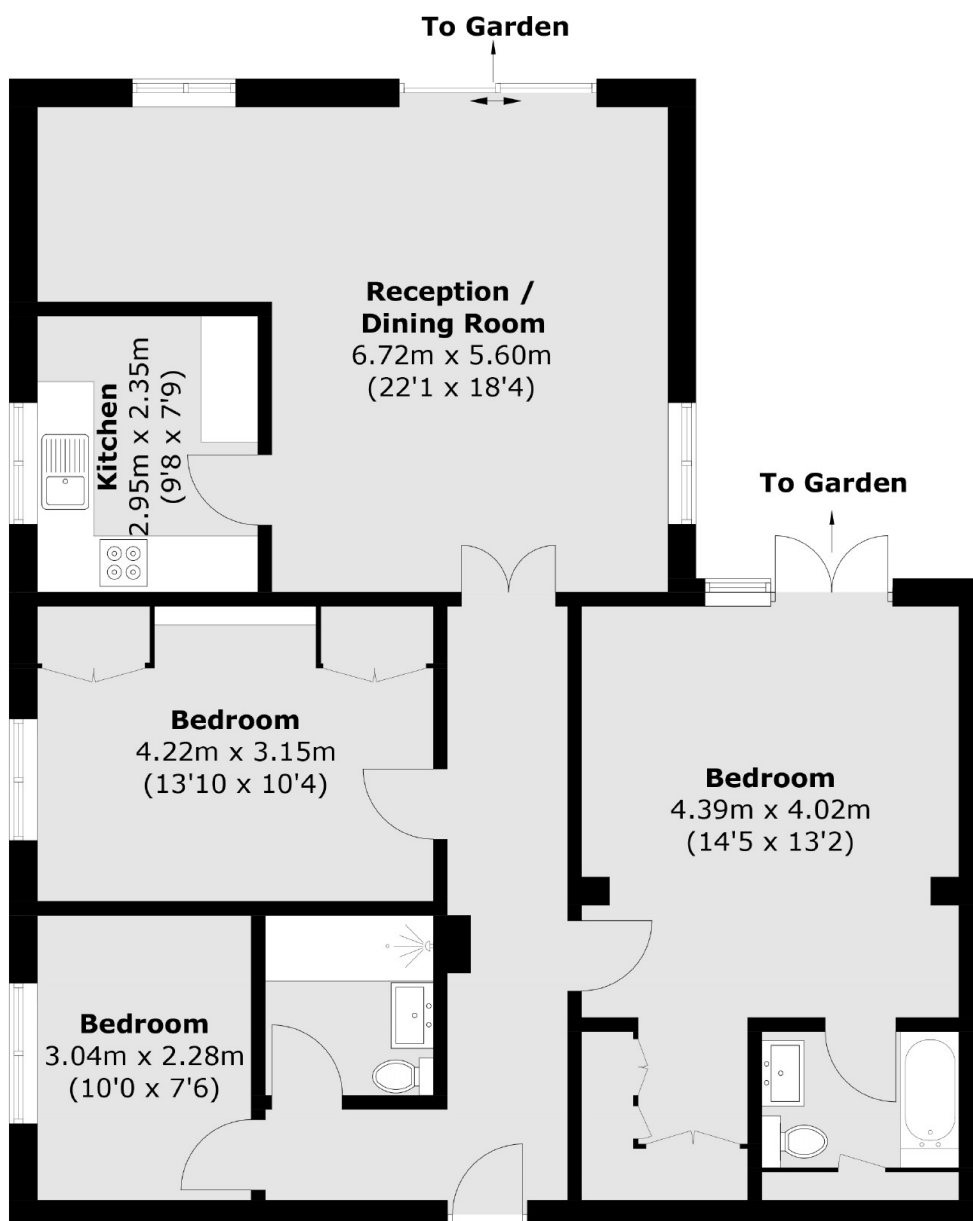
A spacious three-bedroom ground floor period conversion with two bathrooms. This property comes complete with a private garden, off street parking for one car, and access to a large communal garden, situated within walking distance of Finchley Central Underground Station.

The property is conveniently located within walking distance to the multiple amenities on Regents Park Road and Ballards Lane along with the picturesque surroundings of Dollis Valley Greenwalk.

### Features

- Private Garden
- Period Conversion
- Two Bathrooms
- Off Street Parking For One Car
- Access To A Communal Garden
- Close To Public Transport

# St. Mary's Avenue, London, N3



Total area (approx.): 98.7 sq. m (1062.4 sq. ft)