



## Southway, N20

£3,950 Per calendar month

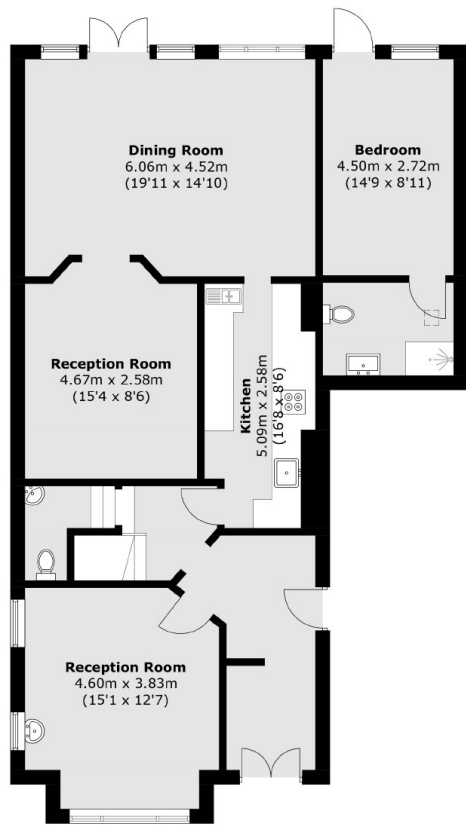
This exceptional seven bedroom, three bathroom detached family home is a rare gem in a highly sought-after neighbourhood known for its proximity to top-rated schools and lush green spaces. The property, available furnished, boasts generous living areas, including a kitchen that flows into a sizable dining room with access to a patio, an additional reception room, and an expansive garden.

Situated within half a mile of the Totteridge & Whetstone Underground station (Northern Line) and the shopping and amenities of Whetstone High Road, this property is ideal for families.

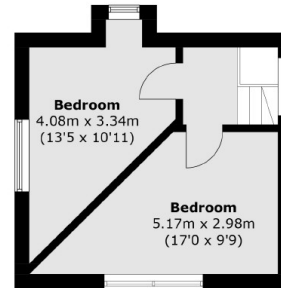
### Features

- Six Bedrooms
- Three Bathrooms
- Two Reception House
- Off Street Parking
- Close to Station

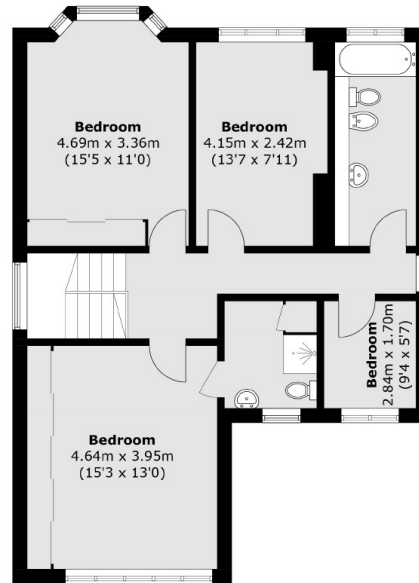
# Southway, London, N20



**Ground Floor**



**Second Floor**



**First Floor**

Total area (approx.): 211.5 sq. m (2,276.4 sq. ft)