



Northwood Gardens, N12

£450,000

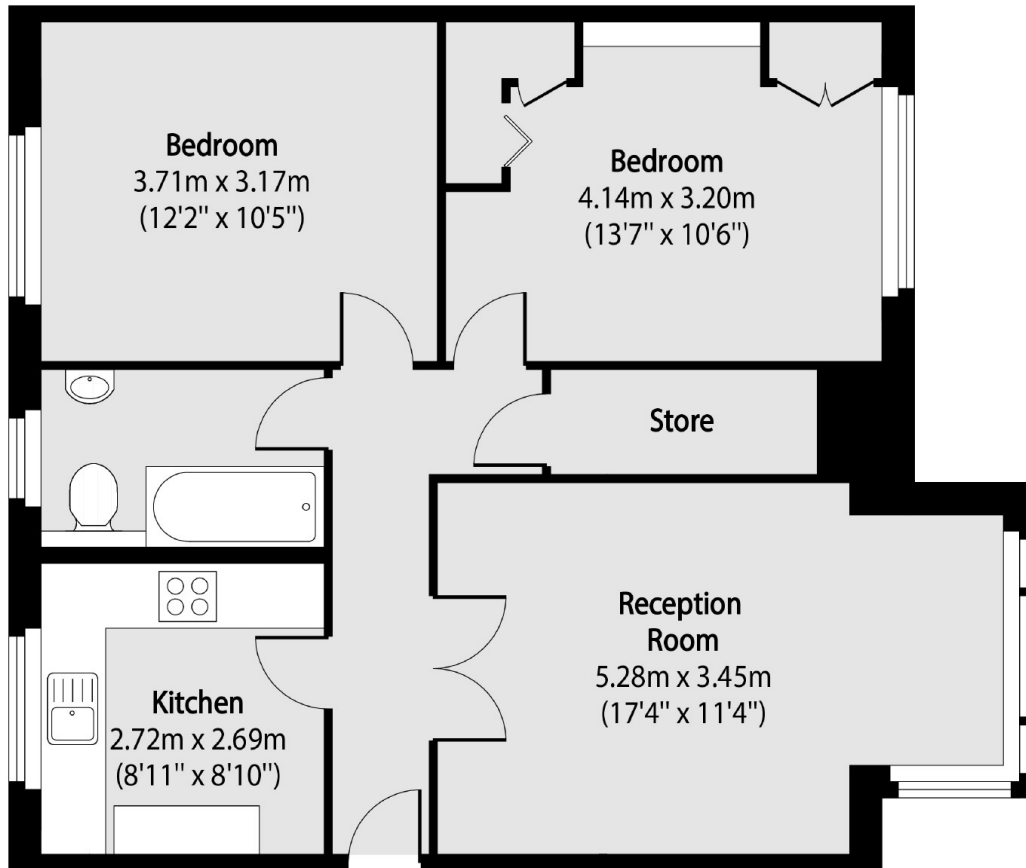
A well presented two bedroom maisonette offering both a private front and rear garden, family bathroom, living and dining room, a fitted kitchen and the property is offered to the market with no onward chain.

Northwood Gardens is a private cul-de-sac situated within close proximity of Woodside Park station (Northern line), as well as Friary Park and High Road, providing an abundance of retail stores, cafés, coffee shops and a Sainsburys. Nearby sought after schooling include Wren Academy Finchley, Woodside School and Northwood Primary School.

Features

- No Chain
- Two Bedrooms
- Living Room
- Family Bathroom
- Private Garden
- Local schools

Northwood Gardens, London, N12



Total area (approx): 64.66 sq m (696 sq. ft)