



Lushington Drive, EN4

£4,500 Per week

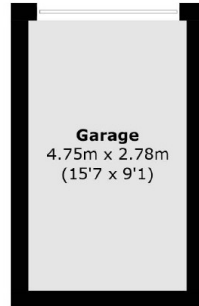
This fabulous 4/5 bed detached house is located in the Historic development of Trent Park. Part of the Chaplin collection, the property spans 3 levels and features a private garage, driveway and garden.

Located in the heart of the development this property is perfect for family life. With the development only being a 14 minute drive to the M25 and from Oakwood station it takes 26 minutes to get into King's cross St. Pancras Station. With over 50 ofsted rated 'Outstanding' schools within a 5 mile radius. Also close by sits many activities/ clubs which include a golf course, a hockey club, go ape and many more for all the family to enjoy.

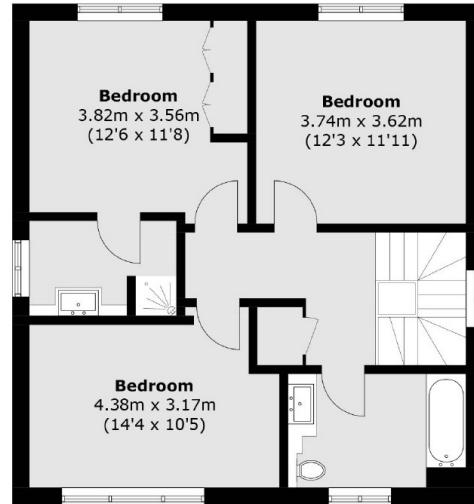
Features

- Five Bedrooms
- Four Bathrooms
- One Reception
- Underfloor Heating Street
- On-Site Gym
- Garage

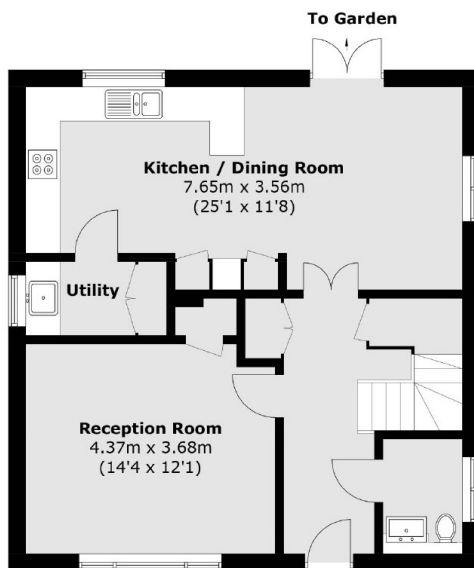
Lushington Drive, Barnet, EN4



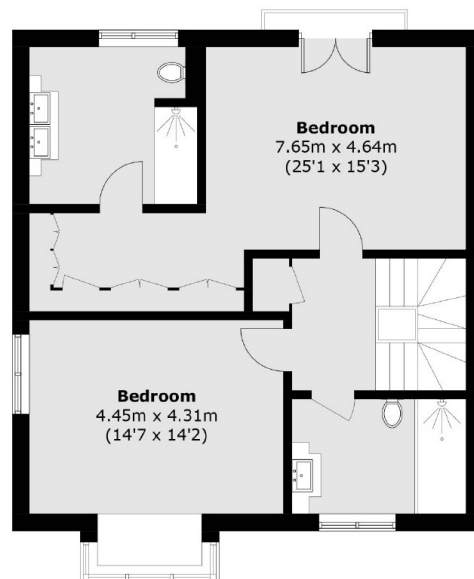
(Not Shown In Actual
Location / Orientation)



Second Floor



Ground Floor



First Floor

Total area (approx.): 188.3 sq. m (2026.7 sq. ft)
Garage: 13.2 sq. m (142.1 sq. ft)