



## Kingsgate Avenue, N3

£1,175,000

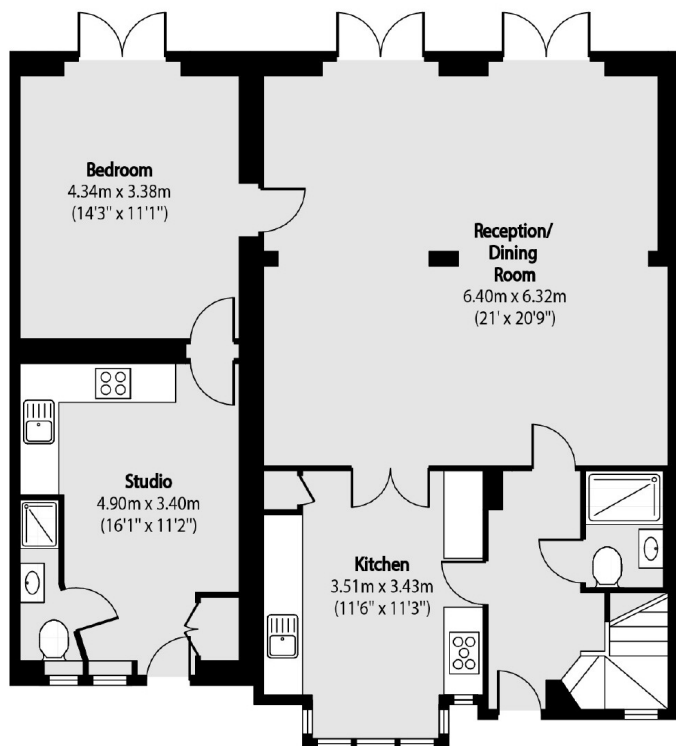
This semi-detached family home is offered to the market with no onward chain and comes complete with four bedrooms, four bathrooms, off-street parking and a sizeable rear garden.

Kingsgate Avenue is ideally situated less than a mile from Finchley Central station, providing fantastic rail links across London on the Northern line, as well as its high street that caters for an array of retail outlets, cafés, bakeries, eateries and bars.

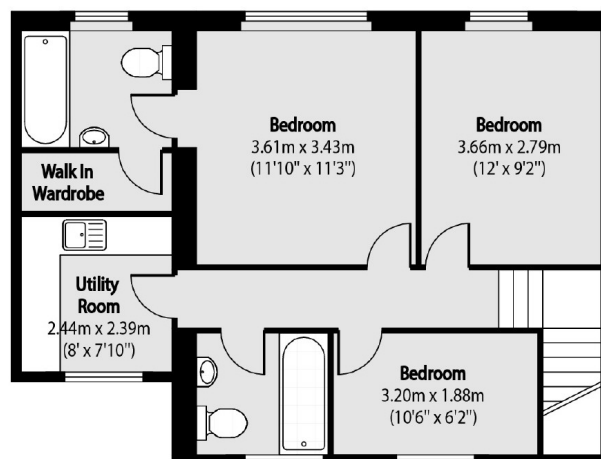
### Features

- Freehold
- Four Bedrooms
- Four Bathrooms
- No Chain
- Off-Street Parking
- Rear Garden

# Kingsgate Avenue, London, N3



Ground Floor



First Floor

Total area (approx): 155.61 sq m (1675 sq. ft)