



Etchingam Park Road, N3

£550,000

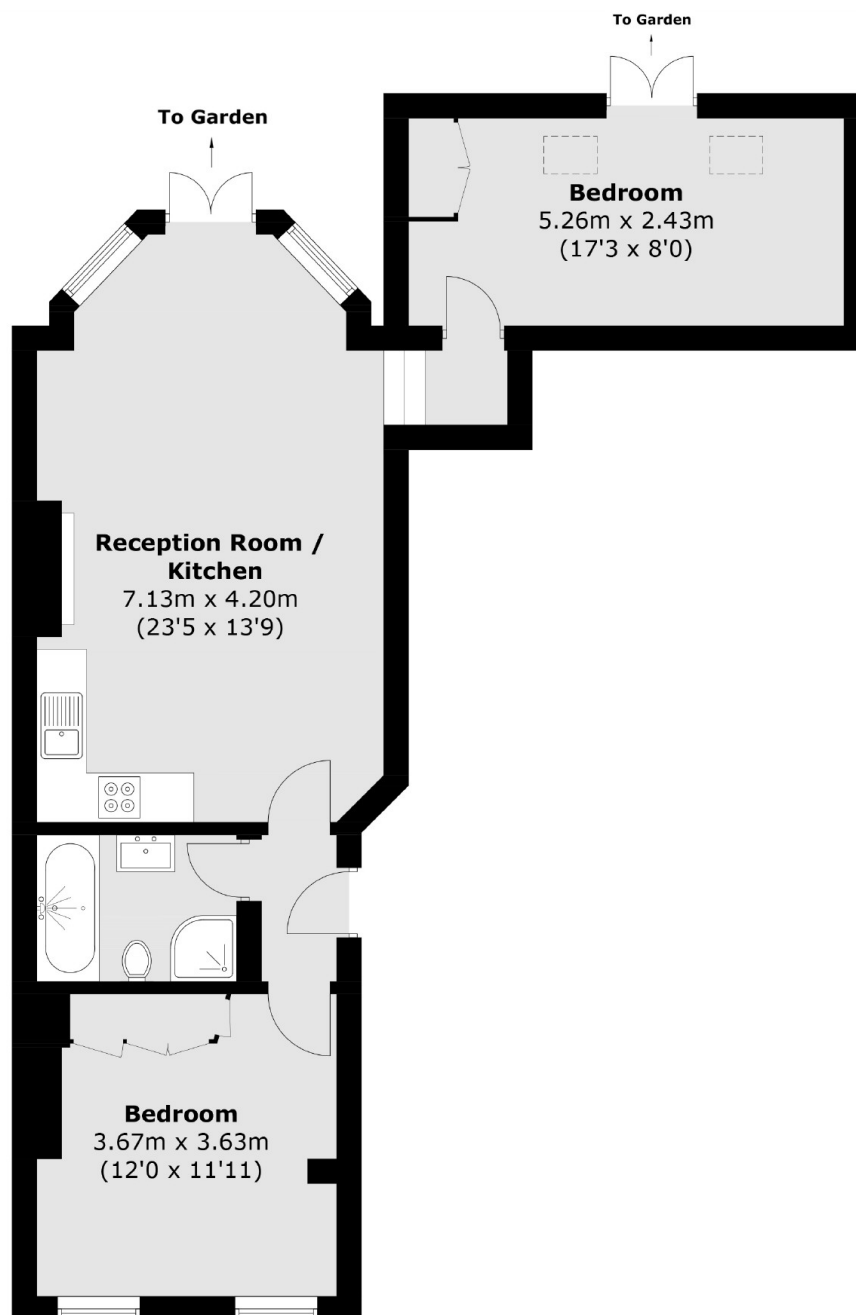
A beautifully converted two bedroom apartment offering its original features including high ceilings, direct access to a mature rear garden, open plan living room and kitchen, family bathroom and a share of the freehold.

Etchingam Park Road is one of Finchley's most sought-after locations, within walking distance of amenities along Ballards Lane as well as being situated opposite the popular Victoria Park.

Features

- Direct Garden Access
- Share of Freehold
- Two Bedrooms
- Open Plan Living
- Family Bathroom
- Close to Amenities

Etchingam Park Road, London, N3



Total area (approx.): 64.0 sq. m (688.9 sq. ft)