



Ballards Lane, N3

£550,000

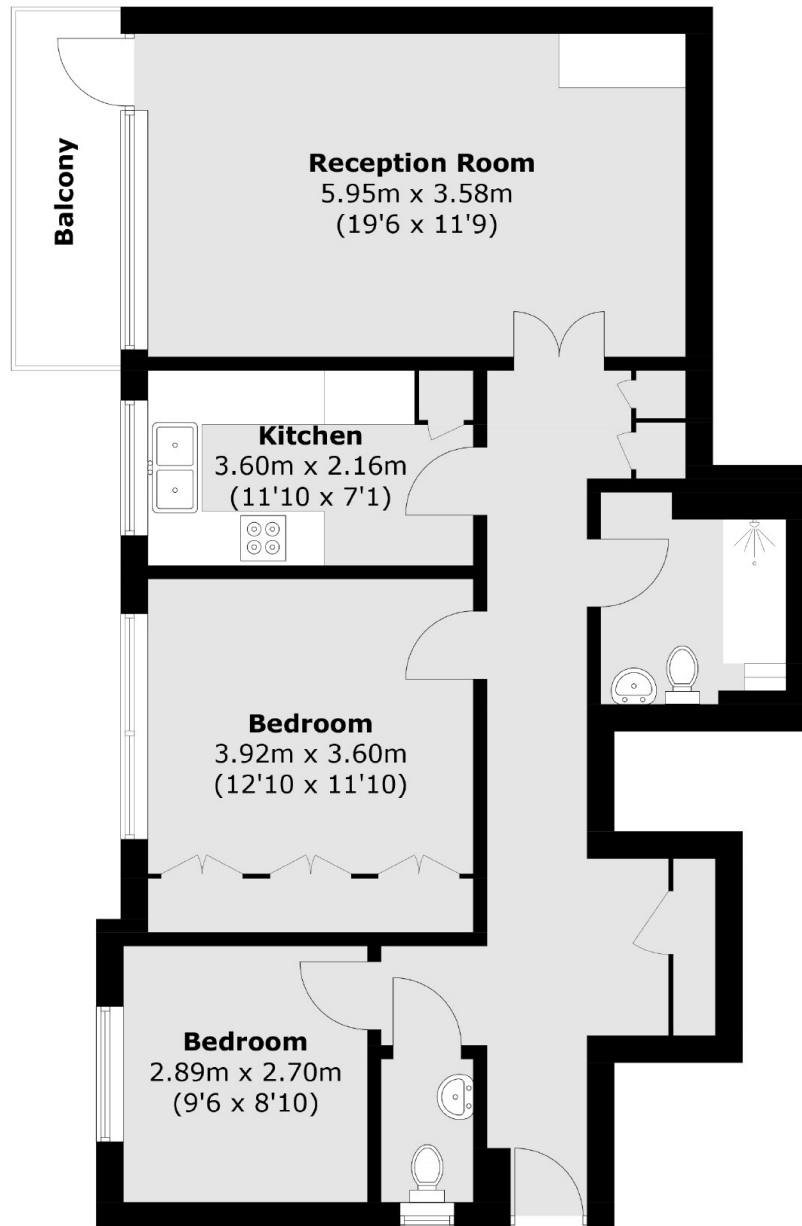
This bright and spacious two bedroom apartment comes complete with a large reception room with access to a private balcony, family bathroom with a second shower room, ample storage, garage, and beautifully maintained communal gardens.

The Fountains is a sought-after development ideally situated on Ballards Lane, providing easy access to local amenities as well as being within a short walk of West Finchley, Finchley Central Station, and the ever-popular Victoria Park.

Features

- No Chain
- Garage
- Two Bedrooms
- Two Bathrooms
- Communal Gardens
- Lift Access

Ballards Lane, London, N3



Total area (approx.): 77.4 sq. m (833.1 sq. ft)
Balcony: 4.5 sq. m (48.4 sq. ft)