



## Dorset Mews, N3

£2,100 Per week

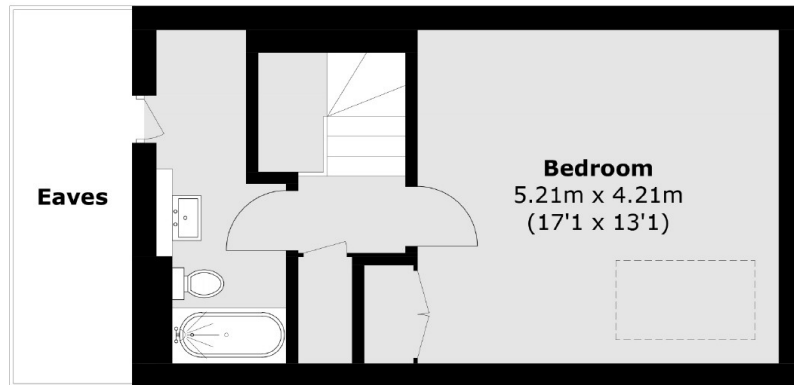
Newly refurbished, two bedroom maisonette. The property is split over two levels and has an allocated parking space.

Walking distance to Finchley Central Underground station and Ballards Lane.

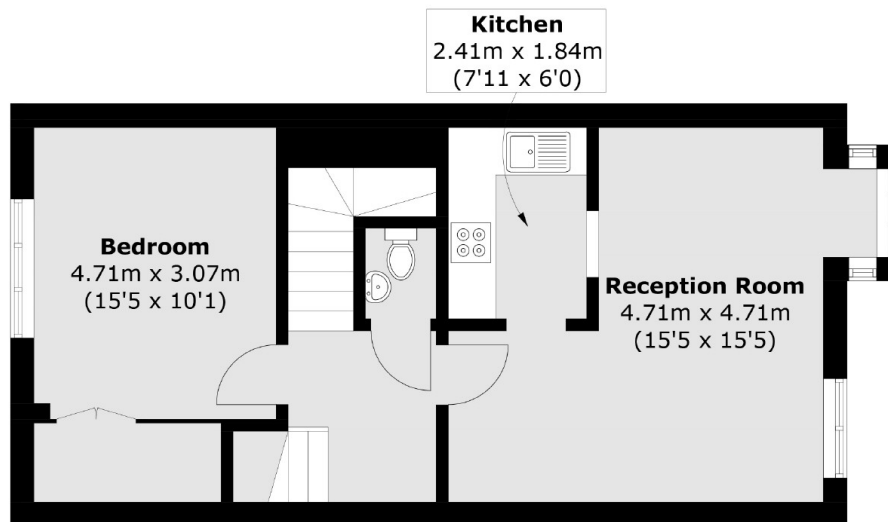
### Features

Two Bedrooms  
One Bathroom  
Duplex  
Parking  
Furnished

# Dorset Mews, London, N3



## Second Floor



## First Floor



## Ground Floor

Total area (approx.): 83.5 sq. m (898.7 sq. ft)  
(Excluding Eaves)