



Birkbeck Road, NW7

£2,300 Per week

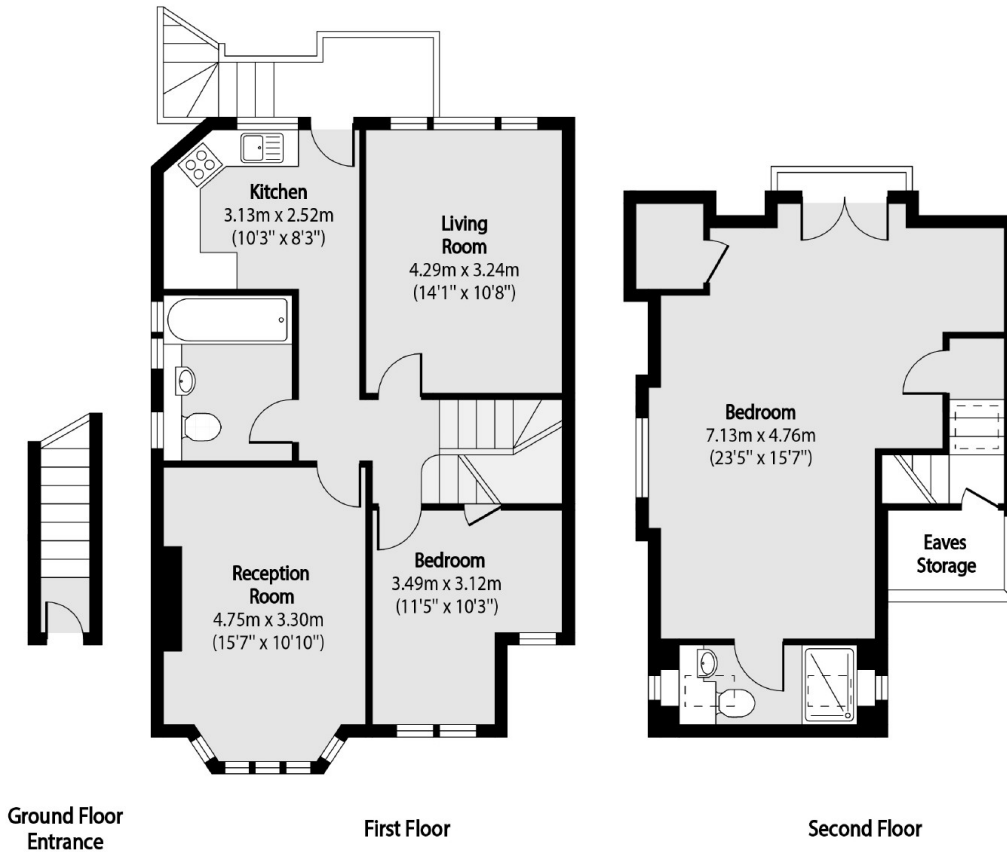
A modern three bedroom, two bathroom duplex maisonette arranged over the first and second floor. The property comprises a spacious living area, modern fitted kitchen and two double bedrooms on the first floor, while on the second floor a generous sized master bedroom with en-suite shower room.

The property is located in the sought after Poet's Corner, within easy access of Mill Hill Broadway amenities and transport links.

Features

- Three Bedrooms
- Two Bathrooms
- Duplex Maisonette
- Modern Interiors
- Communal Gardens
- Garage

Birkbeck Road,
London, NW7



Total area (approx): 104.08 sq m (1120 sq. ft)