



South Lodge Drive, N14

£1,200,000

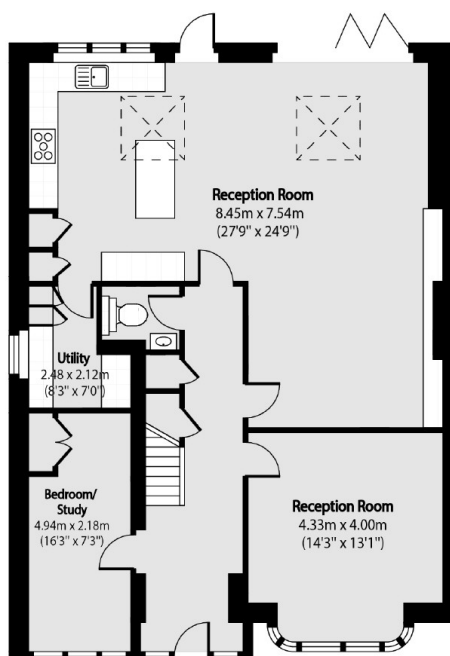
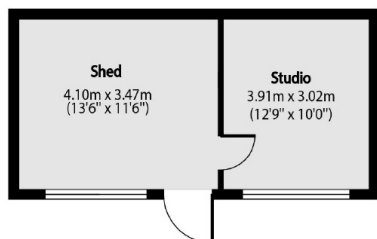
A charming four bedroom semi-detached home which has been tastefully renovated and comes complete with three reception rooms, an open plan kitchen, home office and garden storage, driveway parking and a mature rear garden.

South Lodge Drive is conveniently located within walking distance of Oakwood Station which is on the Piccadilly Line as well as local amenities and highly regarded schooling.

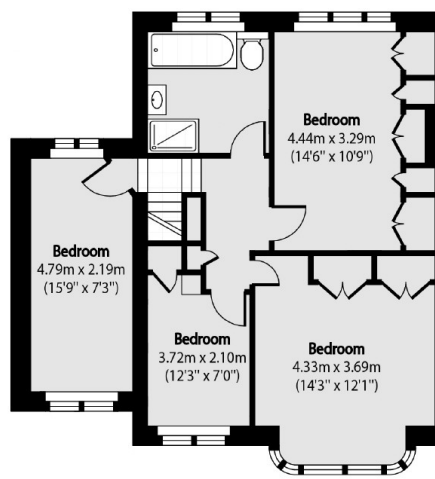
Features

- Four Bedrooms
- Three Reception Rooms
- Downstairs WC
- Home Office
- Close to Station
- Extended

South Lodge Drive, London, N14



Ground Floor



First Floor

Total area (approx): 162.63 sq m (1751 sq. ft)

Outside Building Total area (approx): 25.20 sq m (271 sq. ft)