



Fernwood Crescent, N20

£315,000

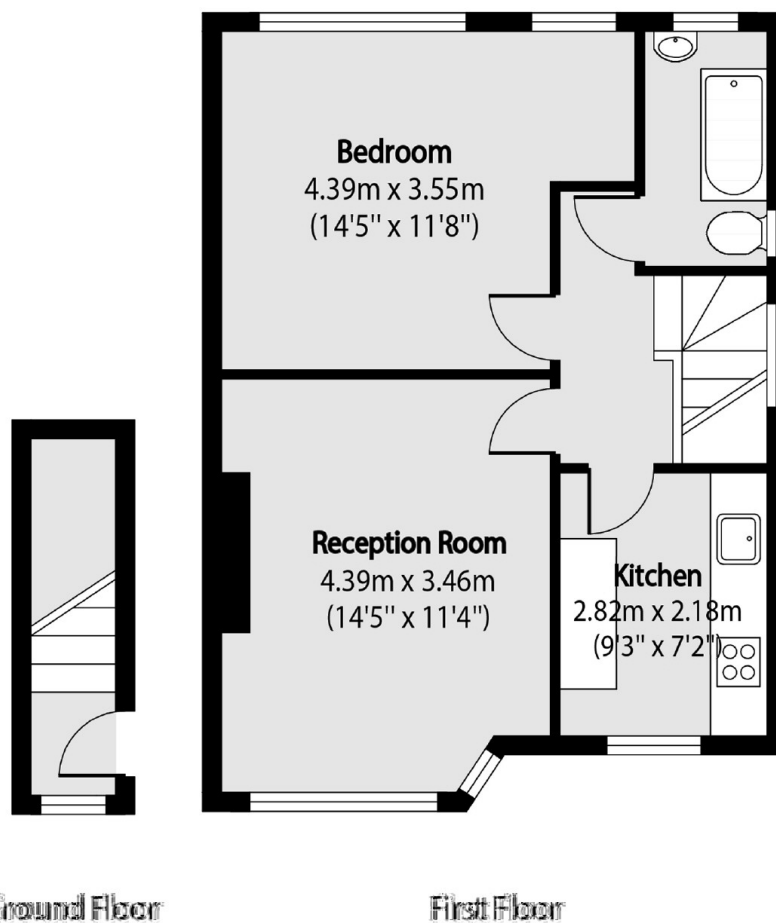
A one double bedroom first floor maisonette complete with loft storage, lounge and diner, fitted kitchen, family bathroom, potential to extend subject to planning and on street parking.

Fernwood Crescent is situated within a mile of both Oakwood and New Southgate Station as well as being within walking distance of nearby amenities.

Features

- One Double Bedroom
- Living Room
- Loft Storage
- On Street Parking
- Near to Amenities
- Family Bathroom

Fernwood Crescent, London, N20



Total area (approx): 47.01 sq m (506 sq. ft)

Dexters

Finchley
126 Ballards Lane
Finchley
London
Sales
020 8742 4180

Energy Rating: D. We aim to make our particulars both accurate and reliable. However they are not guaranteed; nor do they form part of an offer or contract. If you require clarification on any points then please contact us, especially if you're traveling some distance to view. Please note that appliances and heating systems have not been tested and therefore no warranties can be given as to their good working order.

 **RICS** | Regulated
Estate Agent
and Letting Agent

[dexters.co.uk](https://www.dexters.co.uk)