



## Village Road, N3

£2,850 Per calendar month

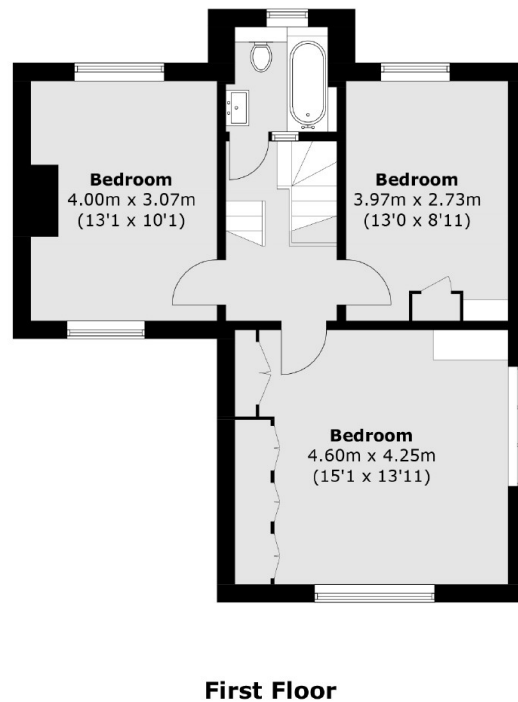
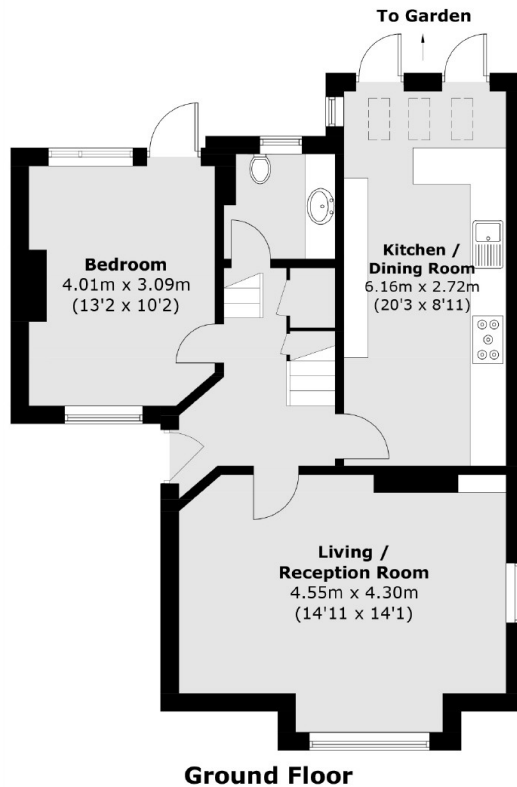
A modern three bedroom house, benefitting from a separate living area and eat in kitchen. Also consists of a modern bathroom and a driveway including a garage.

The property is conveniently located within walking distance to Finchley Central Underground Station (Northern Line) local amenities and moments from Dollis Valley Greenwalk.

### Features

- Three Bedrooms
- Modern Bathroom & Kitchen
- Driveway
- Garage
- Garden
- Part Furnished

# Village Road, London, N3



Total area (approx.): 117.3 sq. m (1262.6 sq. ft)