



## Woodcote Avenue, NW7

£625,000

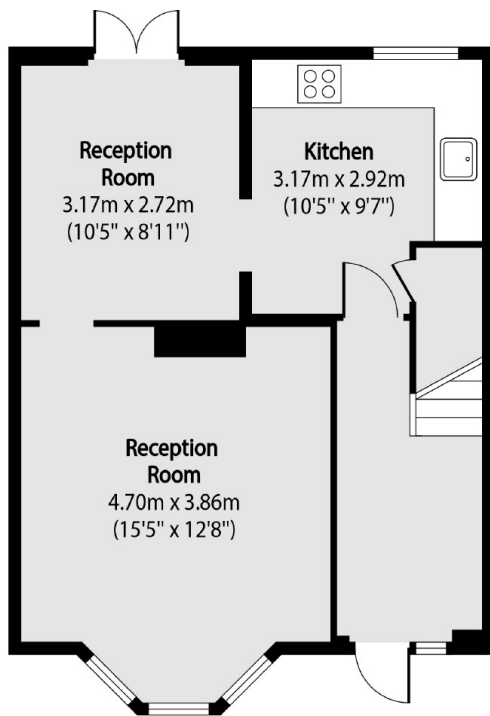
A three bedroom mid terrace home which has been renovated and comes complete with a newly fitted kitchen, bathroom, all new flooring throughout, separate lounge and diner, landscaped rear garden and off street parking.

Woodcote Avenue is located within Mill Hill, in close proximity of highly regarded schooling including Copthall School. Amenities are nearby, such as a large Waitrose and Mill Hill East station, which provides links across the city via the Northern Line.

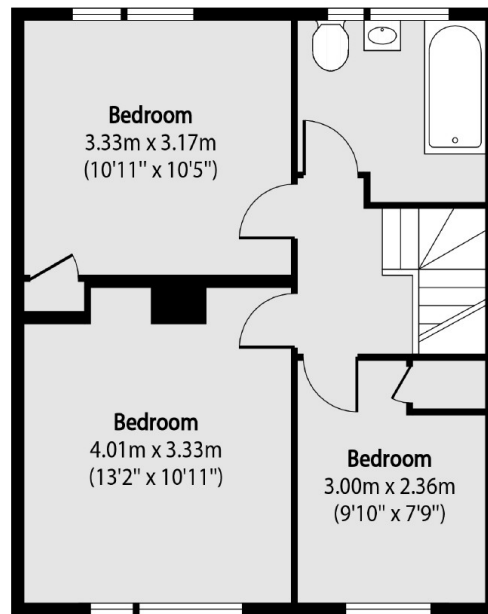
### Features

- Three Bedrooms
- Newly Fitted Kitchen
- Newly Fitted Bathroom
- Separate Lounge and Diner
- Off Street Parking
- Landscaped Rear Garden

# Woodcote Avenue, London, NW7



Ground Floor



First Floor

Total area (approx): 85.84 sq m (924 sq. ft)