



## Ridgeview Close, EN5

£600,000

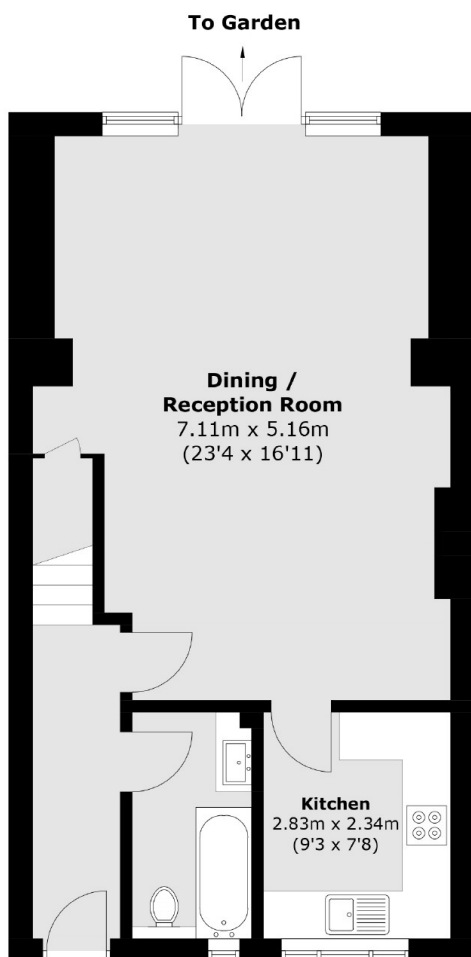
A three bedroom mid terrace house that comes complete with a kitchen, extended living and dining room, downstairs bathrooms, driveway parking and large rear garden.

Situated in this popular location, High Barnet Station is within a short drive as is the high street, offering an abundance of shops, cafés and restaurants.

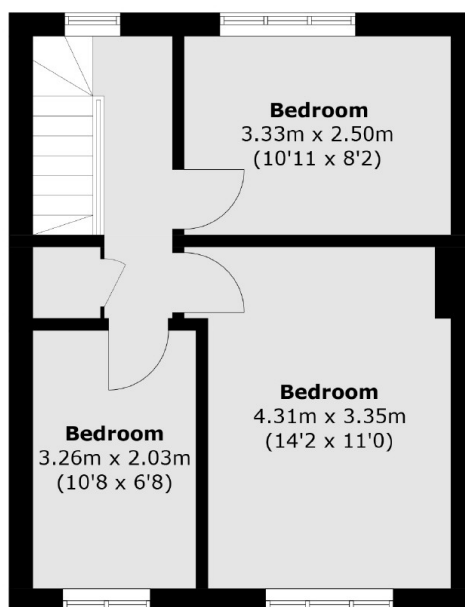
### Features

- Three Bedrooms
- Downstairs Bathroom
- Large Rear Garden
- Driveway Parking
- Extended
- Modern Fitted Kitchen

# Ridgeview Close, Barnet, EN5



**Ground Floor**



**First Floor**

Total area (approx.): 89.9 sq. m (967.7 sq. ft)