



## Ashridge Close, N3

£1,150,000

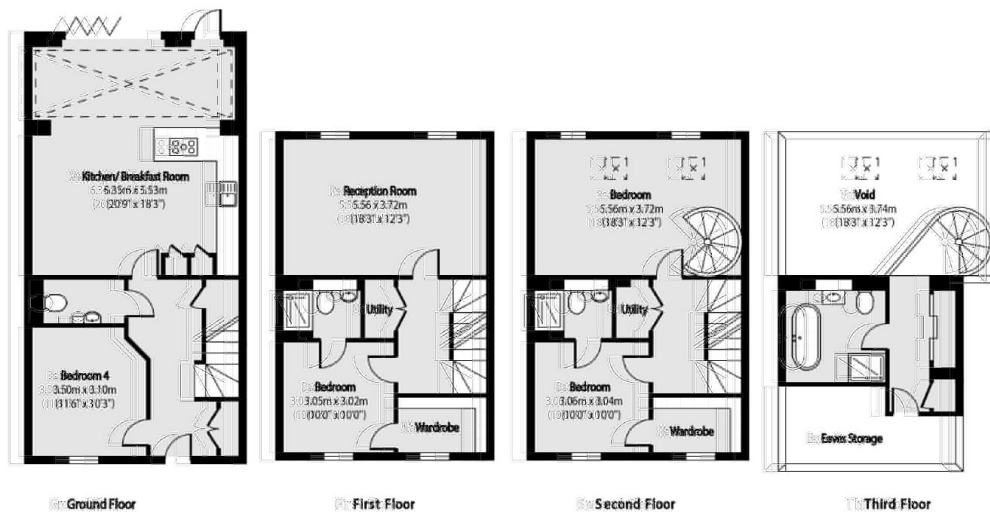
This beautiful end of terrace house offers four generously sized bedrooms, three bathrooms, a private garden and two allocated parking spaces.

This property is well located with road links to the A406 North Circular, A41 and M1 and is within 0.9 miles of Finchley Central Tube Station (Northern Line).

### Features

- Freehold
- Chain Free
- Four Bedroom
- Three Bathroom
- Private Parking
- Private Garden

# Ashridge Close, London, N3



Total area (approx): 17172.42 sq m (1867 sq. ft)  
 Excludes storage total area (approx): 810.814 sq m (8681 sq. ft)